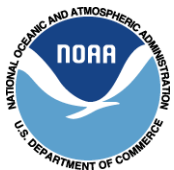


NATIONAL MARINE SANCTUARY PROGRAM

STATUS OF FACILITIES



April 2003

This page left intentionally blank

Chronology of NMSP Decision Making on PAC Funding

Fiscal Year	Amount Appropriated	Situation	Management Actions
2000	\$3,000,000	NMSP does not have in-house expertise in facilities and exhibits planning and construction.	<ul style="list-style-type: none"> • NMSP addresses critical safety concerns and crucial construction needs. • NMSP initiates long range facilities and exhibits planning by engaging three nationally-recognized firms: Booz Allen Hamilton to develop facilities master plan; Lyons/Zaremba, Inc. to design exhibits and signs; and Tom Martin Associates to develop market surveys for directing interpretive facilities investments. • NMSP initiates process to design the Nancy Foster Environmental Center in Florida Keys NMS.
2001	\$3,000,000	NMSP defines long-term facilities requirements.	<ul style="list-style-type: none"> • NMSP completes the inventory and assessment of facilities at all NMSP sites. Prepares baseline report.* • NMSP completes 10-year facilities plan.* • NMSP completes visual standards for signs, kiosks, storefronts, and major partnered visitor centers.* • NMSP completes national visitor market survey.*
2002	\$14,750,000	All appropriated funds earmarked for specific sites; no discretionary funds available for implementation of 10-year plan.	<ul style="list-style-type: none"> • NMSP initiates planning and design for earmarked projects, (e.g., Stellwagen Bank renovation). • 10-year plan is modified to incorporate new prioritized decision-making process for plan implementation given Congressional direction. • Based on the 10-year plan, site facilities plans prepared for Olympic Coast, Thunder Bay, Stellwagen Bank Sanctuaries.* • Signage standards established, begin installing signs.* • NMSP completes site-specific market surveys for Hawaiian Islands Humpback Whale, Gulf of the Farallones, and Thunder Bay Sanctuaries.*
2003	\$10,000,000	Half of appropriated funds earmarked for Mariner Museum. \$5,000,000 available to implement the 10-year plan.	<ul style="list-style-type: none"> • Funds transferred to Mariners Museum. • Reevaluated FY 03 project priorities based on appropriations level.* • Signage program continues nationally (fabrication and installation). • Detailed facility and exhibit planning continues. • Integrated facilities and exhibit planning continues at five sites.

* Products available for presentation.

This page left intentionally blank

Introduction

It has now been over two years since the National Marine Sanctuaries Program (NMSP) began the development of a ten-year Long Range Strategic Plan for its Facilities. The Phase I Report of that Plan (“Framing the Plan”) was issued on May 15, 2001. That report provided a baseline study of then-existing NMSP facilities from which the full development of short-, mid-, and long-range plans could proceed. While not intended in itself as a guide for action, the Phase I Report did make several recommendations about immediate actions that needed to occur because of current operating conditions. Beyond that, however, the compilation of the Report, which involved extensive travel and on-site interviews with Sanctuary managers and staff, proved to be an excellent opportunity to assess additional needed actions.

Phase II of the Long Range Strategic Plan for Facilities, issued in February 2002, laid out a series of steps for each Sanctuary on how best to fulfill its requirements. It also provided a preliminary estimate of the costs of achieving each objective. Phase III, currently underway, is providing detailed analysis and plans for selected Sanctuaries.

During the time in which the surveys and planning have been proceeding, a number of events have transpired that affect NMSP facilities; some are concrete with specific results, while others represent planning efforts in preparation for, or in anticipation of, future actions. This status report is an effort to update the

information in the Phase I Report, by presenting:

- Interim actions and plans at specific sites,
- A more thorough – albeit subjective – review of current conditions and future directions,
- Additional information based upon a greater familiarity of local and national factors affecting facilities amassed in the past two years,
- Information concerning the development of interpretive facilities and exhibits, elements that have subsequently added to the scope of Phase III planning.

Where appropriate, this report also provides summaries of next steps, including critical decision-making requirements.

One of the most significant findings in Phase I was the fact that NMSP facilities are virtually invisible to the public, with essentially negative consequences to the National Marine Sanctuaries Program generally. Considerable effort has gone into identifying ways in which this situation can be overcome, and this update places considerable emphasis on this topic.

It is intended that this update will provide additional insight and depth to the role and importance that NMSP facilities play in the full conduct of the National Marine Sanctuaries’ mission.

This page left intentionally blank

Accomplishments of the Evolving Program in the Past Two Years

- The headquarters of the **Olympic Coast NMS** have been relocated from inadequate space in the basement of the Port Angeles, WA, Federal Building to more visible and spacious leased offices with potential exhibition space in a commercial and retail indoor facility adjacent to and overlooking the waterfront, and serving ferry passengers.
- Funding has been applied, and extensive renovations have begun on a long-term plan to improve and upgrade the headquarters of the **Stellwagen Bank NMS** in Scituate, MA, a facility held by the NMSP.
- The headquarters of the **Cordell Bank NMS** have been moved from the Presidio in San Francisco, CA, to newly created space at the headquarters of the Point Reyes National Seashore in Marin County. The space at the Presidio had been jointly shared with the **Gulf of the Farallones NMS**.
- Architectural plans are in preparation for construction of the Nancy Foster Center, a new administrative office and visitor center for the **Florida Keys NMS** in Key West, FL, and funding is in hand. An economic analysis has also been prepared that indicates the savings to be gained by consolidating the Upper Keys Regional Office of the FKNMS at a purchased marina site.
- Architectural plans are being prepared for the construction of a new building to house the **Monitor NMS and Maritime Archaeology Center** at the Mariners Museum in Newport News, VA. Funding is assured from a Congressionally mandated appropriation. A groundbreaking ceremony for the building was held on March 9, 2003.
- The Mariners' Museum, in partnership with the NMSP, began preparing architectural and exhibit designs for the **USS Monitor Center**, a major facility that will house and exhibit Monitor artifacts
- and tell the story of the Monitor, its discovery, and the research and recovery operations conducted by NOAA since the Monitor became the first National Marine Sanctuary in 1975.
- Architectural plans are being developed for a new multi-purpose building to relieve current overcrowding by expanding office space and to increase capacity for community outreach programs for the headquarters of the **Hawaiian Islands Humpback Whale NMS** at Kihei on the island of Maui.
- New office space has been located for collocation of the **Northwestern Hawaiian Islands Coral Reef Ecosystem Reserve** and the **Hawaiian Islands Humpback Whale NMS** in suburban Honolulu, HI. Occupancy will occur later this year.
- A significant exhibition on the resources of the **Flower Garden Banks NMS** has been installed in the Aquarium of the Americas in New Orleans, LA. In addition, planning is underway to provide office space for **FGBNMS** headquarters in a building scheduled for major renovation at the National Marine Fisheries Service (NMFS) Laboratory in Galveston, TX, enabling a move from current offices in Bryan. However, funding requested by NMFS for laboratory renovations was not approved for FY 2003.
- A site selection study is now in progress to determine the appropriate location for a new visitor center to be constructed by others, which would contain major exhibition space on the resources of the **Monterey Bay NMS**.

This page left intentionally blank.

Status of Individual Sanctuary Facilities

April 1, 2003

PAC Funds Summary FY 00 - 03

\$000

Sanctuary and Category	FY 00 Allocation	FY 01 Allocation	FY 02 Earmarks¹	FY 00-02 Expended through 1/03	FY 00-02 Committed, Not Expended through 1/03	FY 03 Allocation	FY 03 Adjustments²
Channel Islands							
Facilities						30.0	
Exhibits	0.0	130.0	0.0	131.3	-1.3	150.0	
Cordell Bank							
Facilities						0.0	18.0
Exhibits	43.0	100.0	0.0	143.0	0.0	15.0	
Fagatele Bay							
Facilities						120.0	
Exhibits	0.0	25.0	0.0	25.0	25.0	0.0	
Florida Keys							
Facilities						130.0	242.0
Exhibits	1,000.0	900.0	6,257.6	1,479.1	6,678.5	0.0	
Flower Garden Banks							
Facilities						0.0	
Exhibits	0.0	50.0	0.0	50.0	0.0	75.0	
Gray's Reef							
Facilities						0.0	
Exhibits	0.0	0.0	0.0	0.0	0.0	300.0	
Gulf of the Farallones							
Facilities						200.0	
Exhibits	330.0	210.0	0.0	499.4	40.6	0.0	
Hawaiian Islands							
Facilities						150.4	60.0
Exhibits	331.0	80.0	1,422.8	572.2	1,261.6	50.0	
Monitor							
Facilities						4,750.0 ³	100.0
Exhibits	39.0	250.0	4,742.8	5,039.0	-7.2	0.0	

¹ Figures in this column represent Congressional earmarks less charges made against earmarks, plus prior year obligations.

² Paybacks and emergency commitments from FY 03 funds previously agreed to.

³ Represents \$5.0M earmark for Monitor Center less 5%.

PAC Funds Summary FY 00 - 03

\$000

Sanctuary and Category	FY 00 Allocation	FY 01 Allocation	FY 02 Earmarks¹	FY 00-02 Expended through 1/03	FY 00-02 Committed, Not Expended through 1/03	FY 03 Allocation	FY 03 Adjustments²
Monterey Bay							
Facilities						500.0	
Exhibits	80.0	100.0	1,185.2	264.0	1,101.2	0.0	
Olympic Coast							
Facilities						0.0	
Exhibits	58.0	75.0	23.8	58.0	98.8	290.0	
Stellwagen Bank							
Facilities						520.0	439.0
Exhibits	200.0	290.0	474.3	312.5	651.8	75.0	
Thunder Bay							
Facilities						70.0	
Exhibits	0.0	50.0	0.0	40.0	10.0	75.0	
Headquarters and System-Wide Support							
Facilities						447.0	
Exhibits	919.0	740.0	621.1	2,139.1	116.0	1,034.0	100.0
Homeland Security Rec.			22.4	22.4			
Congressional Rec.							32.5
NOAA Reprogram.							27.1
Totals							
Facilities						6,977.0	859.0
Exhibits	3,000.0	3,000.0	14,750.0	10,775.0	9,975.0	2,064.0	100.0

Channel Islands National Marine Sanctuary

Assessment of Current Facilities

Headquarters in **Santa Barbara**, CA, on first floor of building near marina at Santa Barbara Harbor. Historic structure (WW II) owned by City of Santa Barbara; also houses Santa Barbara Maritime Museum and restaurant. This site has a small but steady stream of visitors drawn to the marina, restaurant and Museum. The Sanctuary’s vessel is moored at this marina.

This facility is too small for existing staff with extremely tight spaces. It is not visible to the public due to a location in an alley despite significant numbers of visitors to the general area. The City has not allowed directional signs to guide visitors.

A one-person satellite facility is maintained at the Channel Islands Marina in **Oxnard** in two ground floor rooms leased from the Channel Islands Harbor Authority. It is easily reached by persons seeking it, and is accessible to parking and marina slips, in an area of retail shops, many with a marine flavor. While it is not highly visible, its role in local outreach probably does not require a high profile. The Port Authority is planning to build a new facility nearby at Marina, and has expressed desire to have the Sanctuary occupy space there.

Note: NMSP Headquarters maintains a one-person regional office in a storefront on State Street in downtown Santa Barbara.

The Sanctuary maintains exhibits at the Oxnard headquarters of the Channel Islands National Park through cooperation with National Park Service. Exhibits are now somewhat shopworn and deteriorated; Phase II of Long Range Plan calls for upgrading these displays.



Santa Barbara Marina. Large Tile Roof Building is Maritime Museum . CINMS Headquarters is located on rear side of Museum



Entrance to CINMS Headquarters Santa Barbara Marina

Summary of PAC Funding at CINMS		
<i>FY</i>	<i>\$000</i>	<i>Purpose</i>
2000	0.0	
2001	130.0	Exhibits at Santa Barbara Maritime Museum.
2002	0.0	
Total 00-02	130.0	

Longer Term Facility Prospects:

Among the possibilities under consideration for providing better Sanctuary headquarters space is a proposal by the University of California at Santa Barbara (UCSB) whereby the Sanctuary would occupy space in a new addition to a building now under construction for Marine Sciences Institute (MSI), on the UCSB campus on a peninsula north of the city. Space would be jointly occupied by MSI and CINMS. Construction of addition is most likely dependent upon a Congressionally directed appropriation.

Location would serve as new headquarters for Sanctuary, with sufficient space for current and probable future staff, and would share some space with MSI to the extent that both organizations would have similar or parallel functions. Sanctuary would benefit from enhanced operational efficiency at proposed location. Could also benefit from greater interaction with the University community. Facility would not raise Sanctuary’s visibility level due to security access, parking control, and virtually no casual visitors. Sanctuary would also need to maintain small presence at or near existing headquarters to serve the boating community and be near its vessel.

Public education and visibility for CINMS in Santa Barbara could be provided by attracting visitors to two exhibit sites in Santa Barbara: (1) the Sea Life Center on Stearns Wharf (about half mile from the current headquarters), operated by the Santa Barbara Museum of Natural History, but currently closed pending subscription of sufficient funding), and (2) at Maritime Museum adjacent to current offices. Public visibility would be enhanced in Oxnard through upgrade of exhibitry at Channel Islands National Park and through development of new visitor center at Channel Islands Harbor Marina.

Summary Of Prospects And Next Steps:

UCSB proposal appears to offer a good opportunity to acquire adequate, operationally efficient headquarters space in the Santa Barbara area, although a comprehensive review of all potential sites should be conducted. Building sites that either are on the waterfront or with water views are extremely difficult to find, and would be prohibitively expensive to acquire. Current headquarters site probably cannot be expanded sufficiently to accommodate future needs, nor could it take advantage of a location in a busy public area, despite its obvious marine orientation. An analysis should be undertaken to assess the cost and functional implications of this potential action at UCSB.

The Oxnard site is adequate for the present, but progress on a potential new building there should be closely monitored. Negotiations should be initiated with the Port Authority and input to the design process should be provided if an agreement for collocation is reached.

The design, fabrication, and installation of Sanctuary exhibits should be actively pursued through continued cooperation with partner organizations such as the Sea Life Center of the Santa Barbara Museum of Natural History, the Maritime Museum, and the Channel Islands National Park. Funding has been made available in FY 2003 to support exhibits at the first two of these locations.

FY 2003-2003 PAC Funding Activity at CINMS		
	<i>\$000</i>	<i>Purpose</i>
FY 03 Facilities	30.0	Planning for long-term facility at UCSB
FY 03 Exhibits	50.0	Fund displays in Sea Life Center
FY 03 Exhibits	100.0	Create multimedia exhibits at Maritime Museum
Total FY 03	180.0	
Total FY 00-02	130.0	
Total FY 00-03	310.0	



University of California at Santa Barbara Campus
 Site of Proposed CINMS Headquarters would be immediately in front of the white building, facing the Pacific Ocean

Cordell Bank National Marine Sanctuary

Assessment of Current Facilities:

At the completion of the Phase I Report on the Long Range Plan, the Cordell Bank National Marine Sanctuary (CBNMS) headquarters was collocated with the headquarters of the Gulf of the Farallones National Marine Sanctuary (GFNMS) in a former Coast Guard building at Chrissy Field at the Presidio in **San Francisco, CA**. Discussions were underway at that time between CBNMS and National Park Service staff at the Point Reyes National Seashore (PRNS) about locating in the Park Service building known as the “Red Barn,” near the PRNS headquarters site at **Bear Valley**.

The Red Barn is a former livestock barn with a large open interior that had been part of one of the farms from which PRNS was formed, and is an outstanding example of regional indigenous architecture. It has relatively little public visibility, as the PRNS headquarters is by design not a visitor destination. The Park Service has remodeled a portion of the interior of the building as a PRNS meeting center, and an adjacent part was altered to provide offices and open space to serve as the new CBNMS headquarters. It is attractive and efficient space, and was occupied in Fiscal Year (FY) 2002.

Current facility in the Red Barn is adequate for present purposes as administrative headquarters. However, it offers neither outreach nor interpretive activities, nor does it provide a base for marine operations. The Sanctuary clearly needs some form of interpretive facility near a visitor destination. The best opportunity appears to lie in continued cooperation with the National Park Service at PRNS in an effort to develop visitor interpretive exhibits that portray the interface between the terrestrial and marine environments and resources of the area. In addition, an operational base for vessels should be identified and acquired. It should be noted that the Park Service staff at PRNS has proven to be most willing and interested in a long-term cooperative relationship with CBNMS.

At this time, there are no significant exhibits in place that uniquely portray the resources of the CBNMS.

Summary of PAC Funding at CBNMS		
<i>FY</i>	<i>\$000</i>	<i>Purpose</i>
2000	43.0	Renovations to “Red Barn” building
2001	100.0	Renovations to “Red Barn” building
2002	0.0	
Total 00-02	143.0	



The “Red Barn” at Bear Valley, Point Reyes National Seashore



Entrance to CBNMS Headquarters
At the “Red Barn”

Longer Term Facility Prospects:

The CBNMS has submitted a request for funding for the rehabilitation of the pier at Sacramento Landing on the Tomales Bay waterfront within PRNS. A former steamboat landing, the pier is in deteriorated physical condition. The Park Service and NMSF have a mutual advantage in bringing this facility into operable condition so they both may conduct marine operations from it. The Sanctuary is also seeking funding for the fabrication and installation of exhibits at the PRNS Bear Valley Visitors Center.

Summary Of Prospects And Next Steps:

The new headquarters installation for the CBNMS, as well as the requests for funding, are quite modest efforts, compared to other Sanctuaries in the system. Nevertheless, the good cooperative relationship with the PRNS offers the best opportunity for Sanctuary program growth and facility development, if only because most of the shore side locations that might house CBNMS facilities are within the National Seashore. The development of exhibits at the PRNS Visitor Centers should be undertaken as soon as possible.



Cupola of "Red Barn"

FY 2003-2003 PAC Funding Activity at CBNMS		
	<i>\$000</i>	<i>Purpose</i>
FY 03 Facilities	18.0	Complete parking lot and landscaping
FY 03 Exhibits	15.0	Design exhibits at existing PRNS visitor center
Total FY 03	33.0	
Total FY 00-02	143.0	
Total FY 00-03	176.0	



End of "Red Barn"
Now Entrance to Point Reyes National Seashore
Conference Area

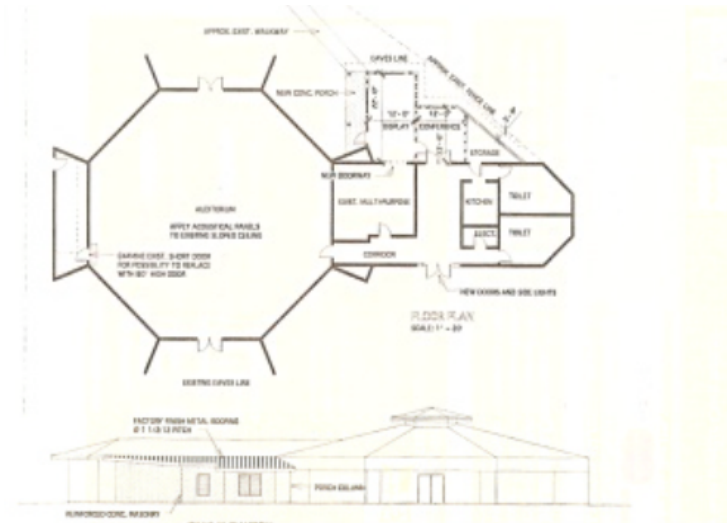
Fagatele Bay National Marine Sanctuary

Assessment of Current Facilities:

At the completion of the Phase I Report, the Fagatele Bay National Marine Sanctuary (FBNMS) headquarters office was located in a single room in a contemporary waterfront building in **Pago Pago, AS**, owned by the Territory of American Samoa. The room, which contained approximately 400 square feet and housed four full- and part-time staff members, was patently inadequate and inefficient. The Sanctuary’s small boat was parked outside on a trailer.

The Phase I Report strongly recommended that more suitable space be found for the Sanctuary as quickly as possible. Since then, the FBNMS staff has moved into larger quarters nearby in the convention center, another Territory-owned building. Plans are currently under review for an addition to this space to better accommodate staff and exhibits.

The new space is clearly more satisfactory than before, but is still too small for the Sanctuary’s staff requirements. Furthermore, it lacks any form of exhibit space, and the Sanctuary vessel remains unsecured.



Floor Plan and Elevation of Current FBNMS Offices, Pago Pago, American Samoa With Proposed Addition (Dotted Lines)

Summary of PAC Funding at FBNMS		
<i>FY</i>	<i>\$000</i>	<i>Purpose</i>
2000	0.0	
2001	25.0	Future facility planning
2002	0.0	
Total 00-02	25.0	



Pago Pago Harbor
Tutuila, American Samoa

Longer Term Facility Prospects:

Occupancy of the present headquarters space in convention center clearly does not meet all of Sanctuary’s requirements. Plans to expand the structure somewhat to meet some of these needs are currently underway, but exhibit and outreach space is not available. The geographic location of FBNMS is in a remote bay on an island in the South Pacific reached only with some difficulty by those with business on the island or determined tourists. Given this situation, the principal educational function of the Sanctuary will be directed toward a greater awareness of the value of the coral reefs, not only within the boundaries of the Sanctuary itself, but throughout this part of the world, by the residents of the island. Furthermore, research may become an important function of this particular site. Thus, accommodation of these functions will be uppermost in mind when seeking new quarters.

The most promising opportunity in fulfilling these requirements will be through construction of a new waterfront Visitor Learning Center in cooperation with the territorial Department of Commerce. This building would be located on the **Pago Pago** shoreline opposite the Executive Office Building, and would house significant exhibit space for the Sanctuary as well as some offices. In addition, it may accommodate the American Samoa Coastal Management Program and perhaps the Tourism Offices. Those offices will need to participate financially in the building’s construction. An earlier proposal (see preliminary sketch) where the Sanctuary would share space with the National Park of American Samoa (NPAS) has been tabled for the present.

Funding and timing are the most formidable aspects of achieving this joint center. Close coordination between the Sanctuary and other occupants and funding partners is imperative, so that adequate funds to meet each agency’s space requirements are made available at approximately the same time.

The Sanctuary has requested funding in FY 2004 for exhibits to be placed at the airport, ferry dock, the waterfront and current offices.

Summary Of Prospects And Next Steps:

This joint building venture between NMSS and various territorial government offices should be pursued with vigor. This implies that interagency coordination should be formalized in a written agreement that spells out the terms and

conditions, as well as the level of participation. Discussion of the means by which Federal funds can be transferred to the territory for construction of the building are now underway.

FY 2003-2003 PAC Funding Activity at FBNMS		
	<i>\$000</i>	<i>Purpose</i>
FY 03 Facilities	50.0	Develop Visitor Learning Center
FY 03 Facilities	60.0	Expand existing office and exhibit space
FY 03 Facilities	10.0	Provide secure storage and workspace for vessel
Total FY 03	120.0	
Total FY 00-02	150.0	
Total FY 00-03	270.0	



Earlier Proposed Joint Fagatele Bay National Marine Sanctuary/National Park of American Samoa Visitor Learning Center. This proposal is now tabled, but the sketch gives a flavor of the style of waterfront building contemplated in Pago Pago.



FBNMS Vessel and Trailer at Pago Pago Waterfront

Florida Keys National Marine Sanctuary

Assessment Of Current Facilities:

Sanctuary headquarters offices are located at **Marathon, FL**, in a large contemporary former house facing Florida Bay, located roughly halfway down the Keys. It is leased from the nonprofit Florida Keys Land and Sea Trust. Although in relatively good condition its original function as a large house contains awkward space when used as offices. Since it is located at the end of a half-mile dirt road off U.S. Route 1 it has no public visibility or functions, nor are any desired. Upon completion of the Nancy Foster Center, most of the Marathon staff will be moved to Key West, and this facility will be vacated.

The Upper Keys Regional Office is located in **Key Largo** in a leased, former plumbing supply warehouse along U.S. Route 1, the main artery of the Keys. It is a white concrete block structure, with a large blue painted FKNMS sign running the entire length of the building, and thus is perhaps the most visible in the entire NMSP network of facilities. It contains offices on the second floor, and storage and shop space on the ground floor, with a fenced yard for boat and trailer storage. The building is in relatively good condition, although the ground floor spaces probably are not code-compliant in a number of areas. The staff has now outgrown the available office space, and is reviewing alternatives for obtaining additional space.

NMSP now holds approximately 3.5 acres of land in Key West at the former Navy Submarine Base. The waterfront site contains two structures, one of which is now being re-designed into the major **Nancy Foster Environmental Center**, a complex that will contain a multi-agency visitor and interpretive center and FKNMS offices.

The Lower Keys Regional Office is located in downtown **Key West** in leased ground floor space of the historic former City Hall, now owned by a non-profit historic organization. It is accessible only from a side entrance, and the space, originally used for municipal fire truck storage, is not entirely weather-tight. Although located within a prominent building, it is not visible to the casual passer-by. It is one of the least satisfactory structures in the NMSP network. Its functions will be relocated to the Nancy Foster Center when that facility is completed.

The FKNMS maintains slips for its sizable fleet of vessels at a number of commercial marinas near its offices.

None of the current structures was built for the purposes they are now called upon to fulfill, and none is completely satisfactory in achieving Sanctuary objectives.

Summary of PAC Funding at FKNMS		
<i>FY</i>	<i>\$000</i>	<i>Purpose</i>
2000	1,000.0	Design and construct Nancy Foster Environmental Center
2001	900.0	Design and construct Nancy Foster Environmental Center
2002	6,257.6	Design and construct Nancy Foster Environmental Center
Total 00-02	8,157.6	



Upper Keys Regional Office
Key Largo, FL



Exterior of FKNMS Headquarters Building,
Marathon, FL

Longer Term Facility Prospects:

The Nancy Foster Environmental Center is now in design. Current plans call for construction of a new boat maintenance building, waterfront and dockage improvements for vessels, demolition of one deteriorated structure, reconstruction of the second building into a two floor administrative office wing and a joint visitor center to be supported by the National Park Service, U.S. Fish and Wildlife Service, and NMSP. The administrative wing of this facility, when completed in 2005, will replace the existing Lower Keys Regional Office, as well as most of the Marathon headquarters (although a small storefront office will be leased in Marathon to accommodate local outreach efforts).

Two solutions are under review for accommodating the growing space requirements at Key Largo. One shorter-term option calls for expansion through Federal funding of the existing building, most likely by building out largely unfinished space. Another longer-term alternative involves the acquisition of a small marina and associated facilities to accommodate offices and boat storage and repair facilities. A study on the feasibility of this latter option revealed significant financial and efficiency savings over all other alternatives.

Summary Of Prospects And Next Steps:

Planning for FKNMS facilities is well-advanced and if the momentum exhibited to date is maintained, many of the inadequacies found in the existing facilities can be overcome and operating efficiency can be significantly increased.

A decision will need to be made shortly regarding the expansion and possible relocation of the Key Largo facility. It is possible that the existing building can be expanded internally to meet interim requirements while planning proceeds on the eventual acquisition of a marina and total relocation of this facility there. Funding in FY 2003 has been made available for both of these activities.

Given the large number of vessels owned by and operated on behalf of the FKNMS, and the significant distances involved in this geographically large Sanctuary, attention should be given in the coming year to assuring the optimum locations and size for slips, docks, and other shore side facilities to support this important aspect of the Sanctuary's activities.

FY 2003-2003 PAC Funding Activity at FKNMS

	<i>\$000</i>	<i>Purpose</i>
FY 03 Facilities	242.0	Design and construct Nancy Foster Environmental Center
FY 03 Facilities	30.0	Plan for construction of new Upper Keys office in Key Largo
FY 03 Facilities	100.0	Expand existing space at Key Largo
Total FY 03	372.0	
Total FY 00-02	8,157.6	
Total FY 00-03	8,529.6	



Existing Key West buildings to be converted to Nancy Foster Environmental Center



FKNMS vessels in canal at potential relocation site for Upper Keys Office near Key Largo, FL

Flower Garden Banks National Marine Sanctuary

Assessment Of Current Facilities:

The single office of the Flower Garden Banks National Marine Sanctuary (FGBNMS) is located in leased space in **Bryan, TX**. The staff recently relocated there from inadequate and non-contiguous leased space in a former Federal Building, also in Bryan.

The move to the current offices is clearly an interim solution that resolved severe space limitations at the former offices. The Report on Phase I of the Long Term Plan pointed out the anomalous situation in which Bryan is 125 miles from the Gulf of Mexico Coast and farther from the Sanctuary itself. The Report recommended moving the FGBNMS offices from Bryan to a coastal location as soon as possible – suggesting the National Marine Fisheries Service (NMFS) Laboratory at **Galveston**, where biological research and administrative support functions are already in place.

It should be noted that the FGBNMS has a significant exhibit on the resources and issues of the Sanctuary in the Aquarium of the Americas along the waterfront in **New Orleans, LA**, an attraction that draws large numbers of visitors. In addition, there are Sanctuary exhibits at the Texas State Aquarium in Corpus Christi.

A Sanctuary vessel is maintained at Freeport, TX, some 40 miles southwest of Galveston.



FGBNMS coral display at Audubon Aquarium of the Americas, New Orleans, LA



Entrance to Audubon Aquarium of the Americas, New Orleans, LA

Summary of PAC Funding at FGBNMS		
<i>FY</i>	<i>\$000</i>	<i>Purpose</i>
2000	0.0	
2001	50.0	Exhibit at Aquarium of the Americas in New Orleans.
2002	0.0	
Total 00-02	50.0	

Longer Term Facility Prospects:

The NMFS Galveston Laboratory is located in a series of historic former military buildings one block from the Gulf of Mexico. This site has been undergoing major rehabilitation over the last few years, with two buildings completely renovated, while also maintaining the historic character of the buildings. Renovations of a third building have been partially funded and are scheduled to begin shortly. Design modifications will be made to accommodate the FGBNMS offices, and upon completion, the offices in Bryan can be relocated there. However, funding to assure reconstruction of this building was not provided in the FY 2003 NMFS appropriations.

This Galveston site does not have high public visibility, and it is clear that public outreach and visitor attractions will have to be located elsewhere. The New Orleans Aquarium is seen as a model for other public facilities, notably one planned at the Tennessee State Aquarium in Chattanooga.

Summary Of Prospects And Next Steps:

Planning now underway for the renovation of the third building at the Galveston Laboratory should be supported to completion, to allow relocation of FGBNMS staff there within a few years. Full funding in subsequent fiscal years for this structure should be sought, including a substantial NMSP contribution to that end. Dock and repair facilities for the Sanctuary vessels are being sought in a port along the coast close to the Sanctuary waters in order to minimize travel times. Exhibit and interpretive space should continue to be sought at appropriate locations (including Galveston) operated by other related organizations.



Building 302
NMFS Galveston Laboratory
Galveston, TX



Building 216
NMFS Galveston Laboratory
Galveston, TX
Likely site of FGBNMS offices



Entrance
NMFS Galveston Laboratory
Galveston, TX

FY 2003-2003 PAC Funding Activity at FGBNMS		
	<i>\$000</i>	<i>Purpose</i>
FY 03 Exhibits	75.0	Create exhibit at Tennessee Aquarium in Chattanooga
Total FY 03	75.0	
Total FY 00-02	50.0	
Total FY 00-03	125.0	

Gray's Reef National Marine Sanctuary

Assessment Of Current Facilities:

The headquarters of the Gray's Reef National Marine Sanctuary (GRNMS) is located in a leased manufactured building on the campus of the Skidaway Institute of Oceanography of the University System of Georgia near **Savannah, GA**. The structure was built to the Sanctuary's specifications and houses offices, a conference room, computer operations and storage for diving equipment. It is located in a grove of trees set back from the main entrance road to the campus. A Sanctuary vessel is maintained at a nearby Skidaway dock.

The building, although undistinguished, is in good condition, and is adequate for immediate needs. As growth occurs, additional space may be required. The Sanctuary enjoys the proximity of the marine-related activities occurring at Skidaway, but the campus is located at considerable distance from the center of Savannah and is not an attraction for visitors. Some school groups utilize the aquarium facilities at the University of Georgia marine education center on Skidaway, but there are few exhibits specifically addressing Sanctuary resources or issues. It seems clear that if the GRNMS offices remain at this location, outreach and educational activities of interest to the general public need to be developed closer to established visitor destinations.



GRNMS headquarters building
Skidaway Campus, University of Georgia
Savannah, GA



GRNMS research vessel Jane Yarn
At Skidaway pier, Savannah, GA

Summary of PAC Funding at GRNMS		
<i>FY</i>	<i>\$000</i>	<i>Purpose</i>
2000	162.0	National exhibits design*
2001	185.0	Exhibits design and marketing survey*
2002	0.0	
Total 00-02	247.0	

* These projects appear under Headquarters and System Support in the summary tables on page 10.

Longer Term Facility Prospects:

Earlier efforts at establishing a major visitor facility in Savannah proper, and possibly including the headquarters itself, have not reached □ and at least for the immediate future are not likely to reach □ fruition. Thus, the Sanctuary has adopted a course that emphasizes educational and interpretive activities at five museum sites in the region: the Fernbank Museum in Atlanta; the South Carolina Aquarium at Charleston; the University of Georgia Aquarium at the Skidaway campus; the Tybee Island Marine Science Center; and the Georgia Southern University Museum.

As more facility space is needed at the Skidaway headquarters, either additions to the existing structure or outbuildings may be appropriate.

Summary Of Prospects And Next Steps:

For the moment, the strategy adopted by the GRNMS appears to be reasonable and prudent. Certainly, the Skidaway site offers some significant partnering opportunities but it lacks public visibility and access. Nevertheless, the Sanctuary should be alert to potential sites where public visibility and proximity to large numbers of visitors are substantially higher, either for its headquarters or major exhibit space or both, and where operational efficiency is enhanced as well.



University of Georgia Aquarium
Skidaway Campus
Savannah, GA



Volunteer Workspace
GRNMS Headquarters
Savannah, GA

FY 2003-2003 PAC Funding Activity at GRNMS		
	<i>\$000</i>	<i>Purpose</i>
FY 03 Exhibits	300.0	Exhibits at five museums and aquaria.
Total FY 03	300.0	
Total FY 00-02	247.0	
Total FY 00-03	547.0	

Gulf of the Farallones National Marine Sanctuary

Assessment Of Current Facilities:

The headquarters of the Gulf of the Farallones National Marine Sanctuary (GFNMS) is housed in a former Coast Guard building in what had been the Presidio military reservation near the Golden Gate in **San Francisco, CA**. It is part of a complex of buildings that adjoin an old airfield (Crissy Field) and is now administered by the National Park Service as part of the Golden Gate National Recreation Area (GGNRA). The building has three floors plus a cupola, and is well situated with views of San Francisco Bay and city, and the Golden Gate Bridge. It is used for offices, and also contains a small Sanctuary visitor center used by school groups and the public. This building also served as headquarters for the Cordell Bank National Marine Sanctuary (CBNMS) until recently when those offices were relocated to Point Reyes National Seashore in Marin County.

The Crissy Field site also includes an adjacent former Coast Guard boathouse and a badly deteriorated and closed pier with a small storage structure atop its end extending into the Bay. All structures are occupied through an agreement with the National Park Service.

An office is also maintained by NMSP headquarters in **Half Moon Bay** to serve the educational and outreach functions of a portion of the coast where the GFNMS and Monterey Bay NMS adjoin. See MBNMS for more detail.

The GFNMS headquarters building is in fair condition, with no immediate or serious physical problems. Nevertheless, it is in need of painting, interior alterations, and a general upgrade. It has an unsightly fire escape, which detracts from an otherwise attractive structure. The former boathouse is not weather tight and will require a major renovation in order to make it usable as an education and outreach center. An architect working pro bono is planning the renovation. The Sanctuary has provided funding to the Park Service for repairing the pier and pier structure, and work has commenced. The facility, when renovated, should be serviceable for many years to come.

The building and its immediate environs do not represent a major tourist destination, but the site is visited daily by a significant number of people, mostly

local residents in search of outdoor exercise, recreation, and scenery. There are a number of well-used walks and jogging trails nearby. This visitation offers an opportunity for educational activities and interpretive exhibits, but in order to reach the large numbers of out-of-town visitors coming to San Francisco other sites will need to be developed for interpretive activities.

Summary of PAC Funding at GRNMS		
<i>FY</i>	<i>\$000</i>	<i>Purpose</i>
2000	330.0	Replace roofs on Coast Guard building. Boathouse, pier house, and tide station. Replace old pier pilings.
2001	210.0	
2002	0.0	
Total 00-02	540.0	



GFNMS Headquarters Building
Crissy Field
Golden Gate National Recreation Area
San Francisco, CA



Pier on San Francisco Bay
Currently deteriorated and closed.
Funded for rehabilitation.
Crissy Field, San Francisco, CA

Longer Term Facility Prospects:

The current site and its environs offer many possibilities in enhancing the operations and facilities of the Sanctuary. Renovation of the existing building, the boathouse, and the pier will go a long way toward that end. However, two other nearby structures conceivably could be added to the complex in the future to serve specific functions. The particularly handsome former Coast Guard Commandant’s house lies immediately adjacent to the headquarters building and is currently in use. It is a potential candidate for Sanctuary use as offices should more space be required. Across one end of Crissy Field is a vacant concrete and glass industrial building of utilitarian design that seems particularly well suited to serving as a future exhibit hall for the Sanctuary; unlike the other structures mentioned above, it is held by the Presidio Trust, a Federal agency.

The Sanctuary has been in discussions with the California Academy of Science (CAS), a major visitor destination, concerning the development of a large exhibit featuring the resources of the Sanctuary. The exhibit is to be constructed later in the decade following an extensive renovation and reconstruction of its facility in Golden Gate Park.

Funding has been requested by the Sanctuary for the rehabilitation of facilities at the Southeast Farallon Islands for housing and supporting research activities.

Summary Of Prospects And Next Steps:

The actions described above for the existing facilities held by the GFNMS should be actively pursued as funding becomes available over the next three to five years. Further, the exhibit at CAS should be developed and made ready for installation around 2007 or 2008. Discussions should also take place soon concerning the renovation of the Crissy Field industrial building potentially for exhibition use.

FY 2003-20034 PAC Funding Activity at GFNMS

	<i>\$000</i>	<i>Purpose</i>
FY 03 Facilities	200.0	Renovate boathouse at Crissy Field
Total FY 03	200.0	
Total FY 00-02	540.0	
Total FY 00-03	740.0	



California Academy of Sciences
Golden Gate Park
Site of new GFNMS exhibits
San Francisco, CA



Industrial Building at
Crissy Field.
Potential GFNMS
Visitor Center

Hawaiian Islands Humpback Whale National Marine Sanctuary

Assessment Of Current Facilities:

The Hawaiian Islands Humpback Whale National Marine Sanctuary (HIHWNMS) currently occupies facilities on three of the Islands: **Maui, Oahu, and Kauai**.

The Sanctuary headquarters are located in owned buildings on the waterfront in the **Kihei area of Maui**. A World War II era two-story structure (with cupola) serves as offices and meeting area, and overlooks an ancient native Hawaiian fishpond. A garage building serves as storage space, while a concrete block structure has been fitted out as a small visitor center. The original waterfront structure has been cosmetically restored from its deteriorated condition when NMSP assumed control a few years ago, but considerably more work will be required to make it code-compliant and suitable for public use. Planning has proceeded for a complete re-design of the site. Design is currently underway to demolish the existing garage building and replace it with a larger multi-purpose structure containing additional offices and meeting spaces. This effort is proceeding toward construction. The Maui site is on the seaward side of a coastal road serving the largely tourist and condominium area of Kihei. While not highly visible from the road, it does have a large sign at the entrance, and it is visited regularly by substantial numbers of people, mostly from the local area.

The Oahu offices of the HIHWNMS are currently located in an office park environment across a major road from the oceanfront in the eastern suburbs of **Honolulu**. The leased facility is quite small, housing only a handful of offices facing an open landscaped courtyard on the ground floor of a two story building. However, the offices will shortly be relocated into more spacious and attractive third floor space (with an atrium) in an adjacent office building in the same complex. The new space will be shared with the Northwestern Hawaiian Islands Coral Reef Ecosystem Reserve, and with the NMSP Pacific regional coordinator, a new function. Because county regulations allow only one sign per structure and that has been used by the lessor to identify the property, neither the current space nor the new offices are visible to the passer-by. It seems unlikely that this situation will improve markedly in the future and Sanctuary visibility will have to be achieved in other ways.

The Kauai offices are on the second floor of an office building facing a secondary road in **Lihue**. This one-person leased facility contains only a few

rooms and serves primarily as an outreach operation for the island of Kauai. It is quite functional and new, but with minimum visibility. In contrast to Oahu, however, exterior signs on the building for tenants are allowed and it is anticipated that one will be placed on the structure shortly.

The Sanctuary does not currently have any facilities for boat operations.

Summary of PAC Funding at HIHWNMS		
<i>FY</i>	<i>\$000</i>	<i>Purpose</i>
2000	331.0	Kihei building renovations and ten-year facility plan.
2001	80.0	Kihei building repairs and renovations.
2002	1,422.8	Design and construction of new Kihei multi-purpose building.
Total 00-02	1,833.8	



HIHWNMS Headquarters
Kihei, Maui, HI



Current HIHWNMS Honolulu offices

Longer Term Facility Prospects:

When the virtually total re-design of the Kihei facility is complete within a few years, the Sanctuary headquarters will have a first-rate installation meeting its requirements. Both the Oahu and Kauai offices are adequate for their purposes but contain no public educational functions. An opportunity now exists to place an exhibit in a Waikiki Beach hotel, and an exhibit is planned for the Maui Aquarium near the Kihei facility, but other interpretive facilities are needed throughout the shore side of the Sanctuary. Plans are in the conceptual stage for outreach offices on most of the other islands to serve local populations. Currently, the development of a new field office at Kona on the island of Hawaii is being explored.

Summary Of Prospects And Next Steps:

The most pressing needs for the HIHWNMS are for educational and interpretive activities. Two “publics” need to be served here: the local residents, which include regular visitors with property here, and the sizable tourist population. An overall interpretive plan will be developed to determine how best to meet these differing needs on all or most of the Islands in concert with a plan for the administrative functions of the Sanctuary. A coordinated boat operations plan should also be developed for the entire Sanctuary.



Commercial Office Building
Containing new HIHWNMS and
NWHICRER offices
Honolulu, HI

FY 2003-2003 PAC Funding Activity at HIHWNMS

	<i>\$000</i>	<i>Purpose</i>
FY 03 Facilities	60.0	Repair staircase at Kihei facility
FY 03 Facilities	150.4	Continue multi-purpose building at Kihei
FY 03 Exhibits	25.0	Exhibits at Outrigger Reef Hotel at Waikiki
FY 03 Exhibits	25.0	Three-Sanctuary display for Honolulu offices
Total FY 03	320.0	
Total FY 00-02	1,833.8	
Total FY 00-03	2,153.8	



Interior atrium of new HIHWNMS and
NWHICRER
Honolulu, HI

Monitor National Marine Sanctuary

Assessment Of Current Facilities:

The sole facility for the Monitor National Marine Sanctuary (MNMS) is located on the grounds of The Mariners' Museum in Newport News, VA, in a double-wide trailer across a minor street from the Museum's library and research building. The facility contains office space and storage. It is a short walk from the Museum's curation facilities where a number of large artifacts recovered from the wreck of the USS Monitor off the coast of North Carolina are being conserved and treated for eventual exhibition.

The current facility is clearly inadequate and inappropriate given the importance and public interest accorded to the Sanctuary in recent years. It does not provide sufficient space for its occupants or the functions the Sanctuary requires. It has no public visibility, and lacks even the most rudimentary accommodations.



Model of submerged *USS Monitor*
With lifting apparatus
MNMS headquarters
Newport News, VA

Summary of PAC Funding at MNMS

<i>FY</i>	<i>\$000</i>	<i>Purpose</i>
2000	39.0	Improvements to Maritime Museum.
2001	250.0	Improvements to Maritime Museum.
2002	4,742.8	Earmark for Maritime Museum, new MNMS building.
Total 00-02	5,031.8	



Exterior of MNMS headquarters
building
Mariners Museum
Newport News, VA



Cleaning interior of
recovered *Monitor* turret,
Mariners Museum
Newport News, VA

Longer Term Facility Prospects:

In FY 2002 Congress authorized \$5M for initiating the construction by The Mariners’ Museum of a USS Monitor Center for displaying the Sanctuary artifacts and educating the public on the importance of the USS Monitor. This has presented the opportunity to correct the deficiencies of the current MNMS facilities. A small portion of this appropriation is to be used to construct a new MNMS building on approximately the same site as part of the Monitor Center. The Museum’s architects are developing a design, and construction and occupancy will occur before the construction of the remainder of the Monitor Center. An archaeological conservation facility to support artifact curation will also be included in the Center. A part of the MNMS offices will be devoted to the newly forming Maritime Archaeology Center (MAC), which will address issues of submerged artifacts in all Sanctuaries.

Summary Of Prospects And Next Steps:

When completed, the new MNMS/MAC should be a fine addition to the network of Sanctuary facilities, and with the eventual construction of the Museum’s Monitor exhibition facilities, no further facility development should be required here.

Annual marine operations at the actual Monitor site are staged from Newport News and Hatteras, with Navy boats, equipment, and other leased vessels. Thus, there is no need at present for marine operations facilities.



Existing *Monitor* exhibit, featuring anchor
Mariners Museum
Newport News, VA



Existing *Monitor* exhibit, with depiction of turret,
Mariners Museum
Newport News, VA

FY 2003-2003 PAC Funding Activity at MNMS

	<i>\$000</i>	<i>Purpose</i>
FY 03 Facilities	100.0	Additional funds for MNMS/MAC building
FY 03 Facilities	4,750.0	Monitor Center at Mariners Museum
Total FY 03	4,850.0	
Total FY 00-02	5,031.8	
Total FY 00-03	9,881.8	

Monterey Bay National Marine Sanctuary

Assessment Of Current Facilities:

The Monterey Bay National Marine Sanctuary (MBNMS) is geographically the largest of the 13 existing Sanctuaries, and maintains three offices along the coast.

The headquarters facility occupies most of a two story leased structure along a moderately busy street in downtown **Monterey, CA**, not far from the main tourist district. It contains administrative offices and meeting areas. A small unstaffed ground floor room contains exhibits and brochures and is maintained as a walk-in visitor center. Sanctuary vessels are moored at the Coast Guard pier, a few blocks away. This building appears to be functionally adequate for the immediate future, although it is awkwardly configured in a number of ways. Its main reception entrance from the street is on the second floor, at the top of a long flight of stairs. The offices can also be reached from the second floor level of a parking lot. A large conference room and a small room for visitors to pick up brochures are located on the ground floor. The building is prominently marked as the Sanctuary offices by a sign placed by the lessor over the entrance, but it is not in a highly trafficked area.

A spacious two-person office is located on the second floor of a building on the main pier in **Santa Cruz**. The building is owned by the City of Santa Cruz, which provides the space at no cost. It serves an outreach function for that part of the Sanctuary shoreline.

A one-person office located in a modular building in the administrative offices of the **Hearst Castle San Simeon State Monument** (state park) in Cambria at the southern end of the Sanctuary serves a similar function.

Both the Santa Cruz and Cambria facilities are small but serviceable for their functions, and largely not visible to the public. A Sanctuary banner roped to the front of the building marks the Santa Cruz office, but it receives no walk-in visitors. The Cambria facility is near the extensive visitor facilities of the Hearst Castle park, but is neither visible nor accessible to that traffic.

In addition, the headquarters of the National Marine Sanctuary System maintains a small leased two-person office in **Half Moon Bay**. This office is

intended to serve the outreach functions for both the MBNMS and the Gulf of the Farallones NMS for the coastal areas near the shore side boundary of the two adjoining Sanctuaries. It is located on the ground floor in a two-story office building one block off the main street. It hosts occasional visiting school groups as part of its outreach function. It is not, however, in a busy area of town, although some consideration is being given to locating an exhibit in a small, well-visited interior shopping mall across the street and accessible from the main street.

Summary of PAC Funding at MBNMS		
<i>FY</i>	<i>\$000</i>	<i>Purpose</i>
2000	80.0	Initiate Phase I of feasibility study for visitor center.
2001	100.0	Construct signage along Sanctuary Scenic Trail in Santa Cruz.
2002	1,185.2	Signage, weather and interpretive kiosks, Phase II visitor center feasibility study. Exhibit plan for visitor center.
Total 00-02	1,365.2	



MBNMS headquarters building, Monterey, CA



MBNMS second floor office on pier, Santa Cruz, CA

Longer Term Facility Prospects:

Two actions are now in planning that affect the MBNMS facilities. The first is a study of potential locations for a major Sanctuary visitor center; sites under consideration are in Santa Cruz, Monterey, and Sea Cliff State Park east of Santa Cruz. The objective is to maintain Federally-funded Sanctuary exhibits and interpretive facilities in a building constructed and owned by a partner organization. The second action is the planned Federal reconstruction of the outer end of the Coast Guard pier in Monterey for use by Sanctuary vessels. This would provide a permanent operational base for existing and future MBNMS vessels, and potentially shop facilities. The pier is currently deteriorated and closed to the public. Partial funding to start this project has been provided in FY 2003

Still undecided is a more permanent and satisfactory location for the Sanctuary headquarters. An earlier effort to obtain the current Coast Guard headquarters building in Monterey fell through when the Coast Guard decided to retain this complex. There are many organizations with a marine orientation in the immediate Monterey Bay area with which partnering might be possible, but the large number may actually impede such a direction. In fact, the size, importance, and public support for this Sanctuary may warrant an independent identity. A detailed analysis of all the facts should be undertaken prior to any decision-making on this issue, although this will need to be completed in conjunction with management plan revisions, which will drive a more complete assessment of resulting needs.

The satellite locations of the Sanctuary also require attention. The Santa Cruz office, while inexpensive, attractively sited, spacious, and near a visitor location is not visible and accessible to the public. Absent a major visitor center in Santa Cruz, there may be a need for a Sanctuary office that is more accessible and inviting to local residents and visitors alike.

The Cambria office is a minimal foothold on the southern flank of the Sanctuary. Other sites should be considered and obtained if at all possible.

Summary Of Prospects And Next Steps:

If anything the MBNMS suffers from having too many potential sites for administrative offices and visitor facilities. Considerable independent analysis of a discriminating nature will be required in order to capitalize on the substantial marine-oriented institutional base of the region and its resultant

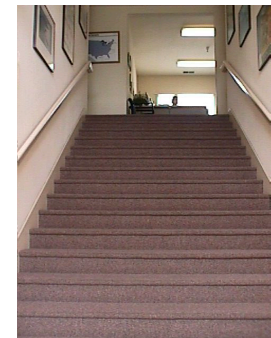
visitation. High priorities should include a first-class Sanctuary headquarters at an appropriate location, siting of a major visitor center, and restoration of docking facilities. The headquarters and satellite office needs could be significantly restructured as the needs for and allocation of staff as a product of a revised management plan become clearer.

In addition, appropriate satellite sites should identified and acquisition actions pursued following functional and economic analysis. Consultation with GFNMS should also occur to maximize effectiveness of the Half Moon Bay office.

FY 2003-2003 PAC Funding Activity at MBNMS		
	<i>\$000</i>	<i>Purpose</i>
FY 03 Facilities	500.0	Remove and replace pier space in Monterey
Total FY 03	500.0	
Total FY 00-02	1,365.2	
Total FY 00-03	1,865.2	



MBNMS waterfront exhibits, Monterey, CA



Main entrance stairs MBNMS headquarters Monterey, CA

Northwestern Hawaiian Islands Coral Reef Ecosystem Reserve

Assessment Of Current Facilities:

The Northwestern Hawaiian Islands Coral Reef Ecosystem Reserve (NWHICRER) was established by Executive Order, and is now supported by a separate appropriation. It is administered by the NMSP and its operations are gradually being integrated into NMSP in anticipation of eventual designation as a National Marine Sanctuary. Its offices are located in Honolulu and Hilo, HI. The headquarters facility in Honolulu has been located on the second floor of the same office building that houses the HIHWNMS offices, but is in the process of moving to third floor space in an adjacent office building. This new leased space will be shared with the HIHWNMS office and the NMSP Pacific regional coordinator when these offices relocate. In addition, the Reserve maintains an office and is opening a visitor facility in Hilo on the Island of Hawaii. The Reserve has recently acquired a vessel, and covered storage for the vessel is being provided through contract on the island of Kauai.

The collocation of the NWHICRER and HIHWNMS in Honolulu will clearly result in more satisfactory space for both entities. However, as mentioned earlier, this site does not provide any public visibility for them, and other educational and visitor facilities for Oahu will have to be sought. The Hilo facility has not been visited and assessed to date.

[Since prior year expenditures have been handled under separate appropriations, they are not included here.]



Exterior of office building now housing NWHICRER.
Space to be shared with HIHWNMS staff offices.
Honolulu, HI

Longer Term Facility Prospects:

Some facilities will need to be developed which respond to the inevitably large space requirements, given the Reserve's short history and the huge geographic area within its boundaries. The Reserve extends 1200 miles northwest almost to Midway Island from the main Hawaiian Islands.

Boat operations may become a major factor here in the future. The location of the NOAA ship is still under discussion, with a field operations base at Midway Atoll being a possibility, with the addition of two small boats and a new NOAA ship to serve the needs of NOS. The nature of public education and outreach efforts has not yet been fully defined and eventually may play a large role in facility planning. It is clear that by NMSP direction there will be as much collocation with the facilities of the HIHWNMS as feasible.

Summary Of Prospects And Next Steps:

As the Reserve proceeds toward Sanctuary designation, its facility requirements will need to be developed as fully as those of the existing Sanctuaries, with appropriate functional and economic analyses of alternative sites and uses.



Interior atrium at third floor offices to be shared among the Pacific Islands Regional Coordinator, NWHICRER, and HIHWNMS. Honolulu, HI

Olympic Coast National Marine Sanctuary

Assessment Of Current Facilities:

Until recently, the Olympic Coast National Marine Sanctuary (OCNMS) headquarters were located in non-contiguous space in the basement of the Federal Building in downtown **Port Angeles, WA**. However, as a result of a Phase III analysis of facility requirements, it was determined that significantly better and more visible space could be obtained under lease in a commercial and retail structure called The Landing, located on the Port Angeles waterfront adjacent to the terminal for ferries serving Victoria, BC. Relocation of Sanctuary staff into space in The Landing was completed in December 2002. A separate lease is being negotiated for exhibition space in the building.

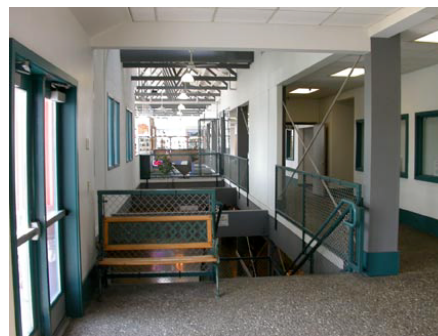
A Sanctuary vessel is stored at a commercial marina in Port Angeles, and there is a small seasonally staffed storefront exhibit at the Neah Bay marina on the Makah Indian Reservation near Cape Flattery. A trailer has been placed at the Coast Guard Base also in Neah Bay for use as quarters for field personnel. The Sanctuary also maintains rented storage space in a Port Angeles warehouse.

With the move to The Landing the Sanctuary will occupy contiguous space on the third floor. The space offers sweeping views of the harbor and Juan de Fuca Strait, and the location provides a significantly higher level of public visibility. Expansion of staff and Sanctuary programs will dictate how well the space will serve over time in terms of size. Even with the new facility in place, certain Sanctuary operations will not be housed there, notably storage and shop space, and vessel support. In addition, other key functions such as laboratory space, conference facilities, and volunteer programs cannot be met in the current location. Since Port Angeles is not adjacent to the Sanctuary waters, but is seen as a northern gateway to its shoreline, it seems clear that other educational and interpretive functions should be located along the coast and at a southern gateway community.

Summary of PAC Funding at OCNMS		
<i>FY</i>	<i>\$000</i>	<i>Purpose</i>
2000	58.0	Seattle Aquarium sea otter exhibit, office upgrades.
2001	75.0	Kalaloch Visitor Contact Station construction.
2002	23.8	Kalaloch Visitor Contact Station construction.
Total 00-02	156.8	



The Landing, Port Angeles, WA in which OCNMS Headquarters is now located.



OCNMS Headquarters Entrance
The Landing
Port Angeles, WA

Longer Term Facility Prospects:

The Phase III Report on the Ten Year Strategic Plan for OCNMS calls for The Landing to be an interim site with ultimate relocation in a Federally-constructed and owned building in a visible location on the Port Angeles waterfront, which would meet all of the Sanctuary’s headquarters space requirements. Some investigation of potential sites has already occurred and will continue in the coming year.

With the occupancy of Sanctuary offices at The Landing in Port Angeles, planning is underway to provide exhibits for the education of visitors passing through the structure.

The Phase III Report also calls for establishment of a visitor contact station and exhibit space at **Kalaloch** on the Pacific coast in conjunction with the Olympic Coast National Park and the Washington Maritime National Wildlife Refuge (USFWS), and consideration of additional gateway visitor facilities at the south end of the Sanctuary.

Funding for additional exhibits along the Sanctuary shoreline and other key coastal locations has been requested.

Summary Of Prospects And Next Steps:

OCNMS has progressed well toward the achievement of adequate and useful quarters from their previous location in the basement of the Federal Building. This momentum should be maintained toward the development of satellite facilities elsewhere on the Olympic Peninsula and a permanent Government-owned installation accommodating all Sanctuary headquarters requirements. Further economic assessments are needed to establish a more comprehensive strategy for this location.

FY 2003-2003 PAC Funding Activity at OCNMS

	<i>\$000</i>	<i>Purpose</i>
FY 03 Exhibits	240.0	Exhibits at The Landing in Port Angeles
FY 03 Exhibits	50.0	Exhibits at Kalaloch Visitor Contact Station
Total FY 03	290.0	
Total FY 00-02	156.8	
Total FY 00-03	446.8	



Dock at the Landing
Port Angeles, WA



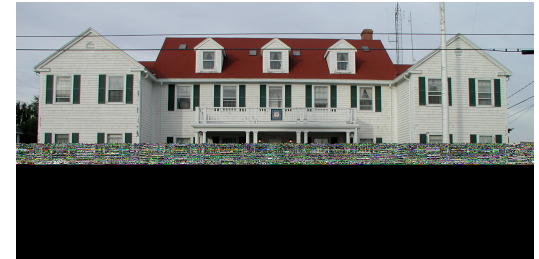
Hallway at OCNMS offices
The Landing
Port Angeles, WA

Stellwagen Bank National Marine Sanctuary

Assessment Of Current Facilities:

The headquarters offices of the Stellwagen Bank National Marine Sanctuary (SBNMS) are located in a two and a half story former Coast Guard station in a residential area of **Scituate, MA**, which has been transferred to NOAA. Both the Massachusetts Environmental Police (MEP) and a National Marine Fisheries Service (NMFS) enforcement officer occupy space in the building. The facility also includes an adjacent garage building, currently used for storage, and a boathouse on Scituate Harbor, approximately a block away from the main structure, where SBNMS and MEP vessels are moored. In addition, the Sanctuary has maintained a small facility in Provincetown in partnership with the Center for Coastal Studies.

The entire installation at Scituate was usable when NMSP assumed control, but deferred maintenance over the years by the Coast Guard required extensive repairs and upgrades to make it code-compliant and fully functional for new uses. Accordingly, substantial resources have been applied by NMSP to improve the main building initially. The construction contract is expected to be awarded early in 2003. A request for funding to renovate the garage building as a meeting facility is now under consideration. Future plans would renovate the boathouse to make it more functional. While this facility is not in an especially visible location, the boathouse can be seen from the Scituate town center and harbor and serves as a local landmark.



SBNMS headquarters building
Scituate, MA



SBNMS boathouse from harbor
Scituate, MA



SBNMS garage at rear of
headquarters building,
proposed as meeting facility,
Scituate, MA

Summary of PAC Funding at SBNMS		
<i>FY</i>	<i>\$000</i>	<i>Purpose</i>
2000	200.0	Exhibit film
2001	290.0	Exhibits and maintenance at Provincetown; Scituate building renovations
2002	474.3	Scituate building renovations
Total 00-02	964.3	

Longer Term Facility Prospects:

The Scituate facility is likely to remain as the SBNMS headquarters for many years to come. When fully renovated and upgraded, it will serve most of the Sanctuary’s needs well, except for public education and interpretation, which are not practical in this residential area and which will have to be accommodated elsewhere. The principal location for such efforts is seen as the well-visited New England Aquarium on the Boston waterfront, and discussions have been proceeding for some time about installing a SBNMS exhibition there. Further economic assessments to determine strategies for these functions are needed.

Longer term plans call for establishing small seasonal satellite visitor centers in Provincetown and Gloucester.

Summary Of Prospects And Next Steps:

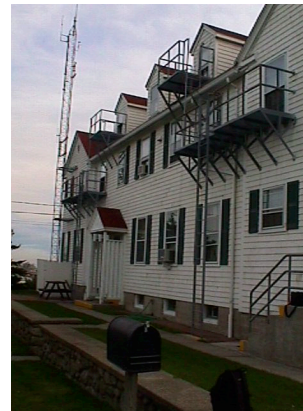
SBNMS has made good progress toward making the Scituate facility fully functional as its headquarters through a major phased renovation of all structures. These efforts should continue to be supported through adequate funding. Further, efforts at establishing interpretive activities at specified locations should continue.



SBNMS headquarters building, Scituate, MA
Extensive renovations required, including handicapped access at front entrance.
Coast Guard sign has been replaced with SBNMS sign



Former Coast Guard pier
From SBNMS boathouse window
Scituate, MA



Rear of SBNMS headquarters building
Scituate, MA
Exterior requires extensive improvements

FY 2003-2003 PAC Funding Activity at SBNMS		
	<i>\$000</i>	<i>Purpose</i>
FY 03 Facilities	55.0	ADA-compliant entrance
FY 03 Facilities	50.0	Commissioning of renovations
FY 03 Facilities	138.0	Repair of pier
FY 03 Facilities	196.0	Addition to meet low renovation bid
FY 03 Facilities	430.0	Complete renovations to administrative and meeting facilities
FY 03 Facilities	20.0	Complete exterior painting of boathouse
FY 03 Facilities	70.0	Design renovation of second floor meeting facility
FY 03 Exhibits	75.0	Three free-standing kiosks at New England Aquarium in Boston
Total FY 03	1,034.0	
Total FY 00-02	964.3	
Total FY 00-03	1,998.3	

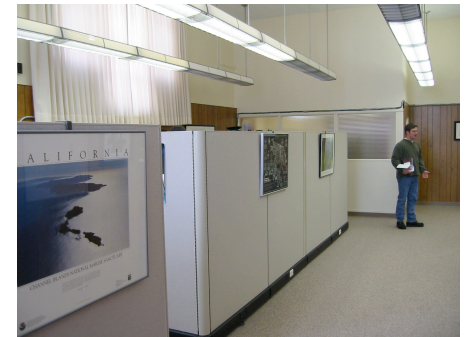
Thunder Bay National Marine Sanctuary and Underwater Preserve

Assessment Of Current Facilities:

The headquarters and sole facility for the Thunder Bay National Marine Sanctuary and Underwater Preserve (TBNMS) are located in a single large first floor room in the two-story Federal Building in downtown **Alpena, MI**. The single room has recently been subdivided with modular furniture into cubicles and a conference room. This structure is part of a small civic center and the rear of the property includes a bulkheaded waterfront on the navigable Thunder Bay River, which is suitable for mooring vessels from the Sanctuary, U.S. Fish and Wildlife Service, and NOAA's Great Lakes Environmental Research Laboratory (GLERL). A new TBNMS sign has been installed outside.

One Sanctuary staff member is housed at the GLERL facility in **Ann Arbor, MI**.

The Federal Building is an aging but attractive building also containing small offices of the U.S. Fish and Wildlife Service, the Coast Guard, the Internal Revenue Service, and a U.S. Senator. It has been moderately well maintained, but has some obvious defects including a leaking roof, poor restrooms, and lack of adequate handicapped access. The space occupied by the Sanctuary is far from adequate as well, with no exhibit space or significant storage or vessel support space, and an internal unisex rest room.



Interior of TBNMS offices
Federal Building, Alpena, MI
Showing newly-installed modular furniture



Exterior of Federal Building
Alpena, MI
Showing exterior signs

Summary of PAC Funding at TBNMS

<i>FY</i>	<i>\$000</i>	<i>Purpose</i>
2000	0.0	
2001	0.0	
2002	0.0	
Total 00-02	0.0	

Longer Term Facility Prospects:

There has been some desire on the part of the local community leadership for TBNMS to consider use of the Alpena Armory adjacent to the Federal Building as TBNMS office and exhibition space. This proposal has been firmly rejected by NMSP headquarters because of unknown, but undoubtedly extremely high capital expenses that would be required. In addition, a garage building adjoining the Armory has been proposed by a potential developer for the same purposes, and will be considered, although it is essentially a storage structure without basic amenities. Two alternatives appear to warrant serious consideration to meet Sanctuary needs. One is the gradual expansion into, and renovation of most or all of the Alpena Federal Building. Recent discussions with the General Services Administration have been held concerning this option. Recently, a second alternative has surfaced in the form of a proposal for the renovation of another structure in downtown Alpena with attributes similar to those of the Federal Building. Both of these options, as well as the leasing of commercial space, will be considered in the Phase III plan development.

Summary Of Prospects And Next Steps:

It seems clear that Alpena will remain the focus of activity for the TBNMS for some time to come. Development of the Phase III plan for TBNMS will continue with consideration of at least three potential Alpena alternatives for functional and economic suitability. Some engineering and architectural evaluation of these sites will be occurring in coming months to facilitate this analysis. This plan should result in the identification of a clear direction for facilities growth in the coming years.



Interior first floor lobby
Federal Building, Alpena, MI
Potential site for permanent TBNMS headquarters



Abandoned factory building
Alpena, MI
Potential site for permanent TBNMS headquarters

FY 2003-2003 PAC Funding Activity at TBNMS

	<i>\$000</i>	<i>Purpose</i>
FY 03 Facilities	70.0	Federal Building repairs, upgrades, security, and furniture
FY 03 Exhibits	75.0	Traditional interactive exhibits in Federal Building
Total FY 03	145.0	
Total FY 00-02	0.0	
Total FY 00-03	145.0	



View from roof of Federal Building
Alpena, MI
Frozen Thunder Bay River and
Second Avenue Bridge

