

NATIONAL MARINE SANCTUARY PROGRAM

STATUS OF FACILITIES



April 2003

This page left intentionally blank

Chronology of NMSP Decision Making on PAC Funding

Fiscal Year	Amount Appropriated	Situation	Management Actions
2000	\$3,000,000	NMSP does not have in-house expertise in facilities and exhibits planning and construction.	<ul style="list-style-type: none"> • NMSP addresses critical safety concerns and crucial construction needs. • NMSP initiates long range facilities and exhibits planning by engaging three nationally-recognized firms: Booz Allen Hamilton to develop facilities master plan; Lyons/Zaremba, Inc. to design exhibits and signs; and Tom Martin Associates to develop market surveys for directing interpretive facilities investments. • NMSP initiates process to design the Nancy Foster Environmental Center in Florida Keys NMS.
2001	\$3,000,000	NMSP defines long-term facilities requirements.	<ul style="list-style-type: none"> • NMSP completes the inventory and assessment of facilities at all NMSP sites. Prepares baseline report.* • NMSP completes 10-year facilities plan.* • NMSP completes visual standards for signs, kiosks, storefronts, and major partnered visitor centers.* • NMSP completes national visitor market survey.*
2002	\$14,750,000	All appropriated funds earmarked for specific sites; no discretionary funds available for implementation of 10-year plan.	<ul style="list-style-type: none"> • NMSP initiates planning and design for earmarked projects, (e.g., Stellwagen Bank renovation). • 10-year plan is modified to incorporate new prioritized decision-making process for plan implementation given Congressional direction. • Based on the 10-year plan, site facilities plans prepared for Olympic Coast, Thunder Bay, Stellwagen Bank Sanctuaries.* • Signage standards established, begin installing signs.* • NMSP completes site-specific market surveys for Hawaiian Islands Humpback Whale, Gulf of the Farallones, and Thunder Bay Sanctuaries.*
2003	\$10,000,000	Half of appropriated funds earmarked for Mariner Museum. \$5,000,000 available to implement the 10-year plan.	<ul style="list-style-type: none"> • Funds transferred to Mariners Museum. • Reevaluated FY 03 project priorities based on appropriations level.* • Signage program continues nationally (fabrication and installation). • Detailed facility and exhibit planning continues. • Integrated facilities and exhibit planning continues at five sites.

* Products available for presentation.

This page left intentionally blank

Introduction

It has now been over two years since the National Marine Sanctuaries Program (NMSP) began the development of a ten-year Long Range Strategic Plan for its Facilities. The Phase I Report of that Plan (“Framing the Plan”) was issued on May 15, 2001. That report provided a baseline study of then-existing NMSP facilities from which the full development of short-, mid-, and long-range plans could proceed. While not intended in itself as a guide for action, the Phase I Report did make several recommendations about immediate actions that needed to occur because of current operating conditions. Beyond that, however, the compilation of the Report, which involved extensive travel and on-site interviews with Sanctuary managers and staff, proved to be an excellent opportunity to assess additional needed actions.

Phase II of the Long Range Strategic Plan for Facilities, issued in February 2002, laid out a series of steps for each Sanctuary on how best to fulfill its requirements. It also provided a preliminary estimate of the costs of achieving each objective. Phase III, currently underway, is providing detailed analysis and plans for selected Sanctuaries.

During the time in which the surveys and planning have been proceeding, a number of events have transpired that affect NMSP facilities; some are concrete with specific results, while others represent planning efforts in preparation for, or in anticipation of, future actions. This status report is an effort to update the

information in the Phase I Report, by presenting:

- Interim actions and plans at specific sites,
- A more thorough – albeit subjective – review of current conditions and future directions,
- Additional information based upon a greater familiarity of local and national factors affecting facilities amassed in the past two years,
- Information concerning the development of interpretive facilities and exhibits, elements that have subsequently added to the scope of Phase III planning.

Where appropriate, this report also provides summaries of next steps, including critical decision-making requirements.

One of the most significant findings in Phase I was the fact that NMSP facilities are virtually invisible to the public, with essentially negative consequences to the National Marine Sanctuaries Program generally. Considerable effort has gone into identifying ways in which this situation can be overcome, and this update places considerable emphasis on this topic.

It is intended that this update will provide additional insight and depth to the role and importance that NMSP facilities play in the full conduct of the National Marine Sanctuaries’ mission.

This page left intentionally blank

Accomplishments of the Evolving Program in the Past Two Years

- The headquarters of the **Olympic Coast NMS** have been relocated from inadequate space in the basement of the Port Angeles, WA, Federal Building to more visible and spacious leased offices with potential exhibition space in a commercial and retail indoor facility adjacent to and overlooking the waterfront, and serving ferry passengers.
- Funding has been applied, and extensive renovations have begun on a long-term plan to improve and upgrade the headquarters of the **Stellwagen Bank NMS** in Scituate, MA, a facility held by the NMSP.
- The headquarters of the **Cordell Bank NMS** have been moved from the Presidio in San Francisco, CA, to newly created space at the headquarters of the Point Reyes National Seashore in Marin County. The space at the Presidio had been jointly shared with the **Gulf of the Farallones NMS**.
- Architectural plans are in preparation for construction of the Nancy Foster Center, a new administrative office and visitor center for the **Florida Keys NMS** in Key West, FL, and funding is in hand. An economic analysis has also been prepared that indicates the savings to be gained by consolidating the Upper Keys Regional Office of the FKNMS at a purchased marina site.
- Architectural plans are being prepared for the construction of a new building to house the **Monitor NMS and Maritime Archaeology Center** at the Mariners Museum in Newport News, VA. Funding is assured from a Congressionally mandated appropriation. A groundbreaking ceremony for the building was held on March 9, 2003.
- The Mariners' Museum, in partnership with the NMSP, began preparing architectural and exhibit designs for the **USS Monitor Center**, a major facility that will house and exhibit Monitor artifacts
- and tell the story of the Monitor, its discovery, and the research and recovery operations conducted by NOAA since the Monitor became the first National Marine Sanctuary in 1975.
- Architectural plans are being developed for a new multi-purpose building to relieve current overcrowding by expanding office space and to increase capacity for community outreach programs for the headquarters of the **Hawaiian Islands Humpback Whale NMS** at Kihei on the island of Maui.
- New office space has been located for collocation of the **Northwestern Hawaiian Islands Coral Reef Ecosystem Reserve** and the **Hawaiian Islands Humpback Whale NMS** in suburban Honolulu, HI. Occupancy will occur later this year.
- A significant exhibition on the resources of the **Flower Garden Banks NMS** has been installed in the Aquarium of the Americas in New Orleans, LA. In addition, planning is underway to provide office space for **FGBNMS** headquarters in a building scheduled for major renovation at the National Marine Fisheries Service (NMFS) Laboratory in Galveston, TX, enabling a move from current offices in Bryan. However, funding requested by NMFS for laboratory renovations was not approved for FY 2003.
- A site selection study is now in progress to determine the appropriate location for a new visitor center to be constructed by others, which would contain major exhibition space on the resources of the **Monterey Bay NMS**.

This page left intentionally blank.

Status of Individual Sanctuary Facilities

April 1, 2003

PAC Funds Summary FY 00 - 03

\$000

Sanctuary and Category	FY 00 Allocation	FY 01 Allocation	FY 02 Earmarks¹	FY 00-02 Expended through 1/03	FY 00-02 Committed, Not Expended through 1/03	FY 03 Allocation	FY 03 Adjustments²
Channel Islands							
Facilities						30.0	
Exhibits	0.0	130.0	0.0	131.3	-1.3	150.0	
Cordell Bank							
Facilities						0.0	18.0
Exhibits	43.0	100.0	0.0	143.0	0.0	15.0	
Fagatele Bay							
Facilities						120.0	
Exhibits	0.0	25.0	0.0	25.0	25.0	0.0	
Florida Keys							
Facilities						130.0	242.0
Exhibits	1,000.0	900.0	6,257.6	1,479.1	6,678.5	0.0	
Flower Garden Banks							
Facilities						0.0	
Exhibits	0.0	50.0	0.0	50.0	0.0	75.0	
Gray's Reef							
Facilities						0.0	
Exhibits	0.0	0.0	0.0	0.0	0.0	300.0	
Gulf of the Farallones							
Facilities						200.0	
Exhibits	330.0	210.0	0.0	499.4	40.6	0.0	
Hawaiian Islands							
Facilities						150.4	60.0
Exhibits	331.0	80.0	1,422.8	572.2	1,261.6	50.0	
Monitor							
Facilities						4,750.0 ³	100.0
Exhibits	39.0	250.0	4,742.8	5,039.0	-7.2	0.0	

¹ Figures in this column represent Congressional earmarks less charges made against earmarks, plus prior year obligations.

² Paybacks and emergency commitments from FY 03 funds previously agreed to.

³ Represents \$5.0M earmark for Monitor Center less 5%.

PAC Funds Summary FY 00 - 03

\$000

Sanctuary and Category	FY 00 Allocation	FY 01 Allocation	FY 02 Earmarks¹	FY 00-02 Expended through 1/03	FY 00-02 Committed, Not Expended through 1/03	FY 03 Allocation	FY 03 Adjustments²
Monterey Bay							
Facilities						500.0	
Exhibits	80.0	100.0	1,185.2	264.0	1,101.2	0.0	
Olympic Coast							
Facilities						0.0	
Exhibits	58.0	75.0	23.8	58.0	98.8	290.0	
Stellwagen Bank							
Facilities						520.0	439.0
Exhibits	200.0	290.0	474.3	312.5	651.8	75.0	
Thunder Bay							
Facilities						70.0	
Exhibits	0.0	50.0	0.0	40.0	10.0	75.0	
Headquarters and System-Wide Support							
Facilities						447.0	
Exhibits	919.0	740.0	621.1	2,139.1	116.0	1,034.0	100.0
Homeland Security Rec.			22.4	22.4			
Congressional Rec.							32.5
NOAA Reprogram.							27.1
Totals							
Facilities						6,977.0	859.0
Exhibits	3,000.0	3,000.0	14,750.0	10,775.0	9,975.0	2,064.0	100.0

Channel Islands National Marine Sanctuary

Assessment of Current Facilities

Headquarters in **Santa Barbara**, CA, on first floor of building near marina at Santa Barbara Harbor. Historic structure (WW II) owned by City of Santa Barbara; also houses Santa Barbara Maritime Museum and restaurant. This site has a small but steady stream of visitors drawn to the marina, restaurant and Museum. The Sanctuary’s vessel is moored at this marina.

This facility is too small for existing staff with extremely tight spaces. It is not visible to the public due to a location in an alley despite significant numbers of visitors to the general area. The City has not allowed directional signs to guide visitors.

A one-person satellite facility is maintained at the Channel Islands Marina in **Oxnard** in two ground floor rooms leased from the Channel Islands Harbor Authority. It is easily reached by persons seeking it, and is accessible to parking and marina slips, in an area of retail shops, many with a marine flavor. While it is not highly visible, its role in local outreach probably does not require a high profile. The Port Authority is planning to build a new facility nearby at Marina, and has expressed desire to have the Sanctuary occupy space there.

Note: NMSP Headquarters maintains a one-person regional office in a storefront on State Street in downtown Santa Barbara.

The Sanctuary maintains exhibits at the Oxnard headquarters of the Channel Islands National Park through cooperation with National Park Service. Exhibits are now somewhat shopworn and deteriorated; Phase II of Long Range Plan calls for upgrading these displays.



Santa Barbara Marina. Large Tile Roof Building is Maritime Museum . CINMS Headquarters is located on rear side of Museum



Entrance to CINMS Headquarters Santa Barbara Marina

Summary of PAC Funding at CINMS		
<i>FY</i>	<i>\$000</i>	<i>Purpose</i>
2000	0.0	
2001	130.0	Exhibits at Santa Barbara Maritime Museum.
2002	0.0	
Total 00-02	130.0	

Longer Term Facility Prospects:

Among the possibilities under consideration for providing better Sanctuary headquarters space is a proposal by the University of California at Santa Barbara (UCSB) whereby the Sanctuary would occupy space in a new addition to a building now under construction for Marine Sciences Institute (MSI), on the UCSB campus on a peninsula north of the city. Space would be jointly occupied by MSI and CINMS. Construction of addition is most likely dependent upon a Congressionally directed appropriation.

Location would serve as new headquarters for Sanctuary, with sufficient space for current and probable future staff, and would share some space with MSI to the extent that both organizations would have similar or parallel functions. Sanctuary would benefit from enhanced operational efficiency at proposed location. Could also benefit from greater interaction with the University community. Facility would not raise Sanctuary’s visibility level due to security access, parking control, and virtually no casual visitors. Sanctuary would also need to maintain small presence at or near existing headquarters to serve the boating community and be near its vessel.

Public education and visibility for CINMS in Santa Barbara could be provided by attracting visitors to two exhibit sites in Santa Barbara: (1) the Sea Life Center on Stearns Wharf (about half mile from the current headquarters), operated by the Santa Barbara Museum of Natural History, but currently closed pending subscription of sufficient funding), and (2) at Maritime Museum adjacent to current offices. Public visibility would be enhanced in Oxnard through upgrade of exhibitry at Channel Islands National Park and through development of new visitor center at Channel Islands Harbor Marina.

Summary Of Prospects And Next Steps:

UCSB proposal appears to offer a good opportunity to acquire adequate, operationally efficient headquarters space in the Santa Barbara area, although a comprehensive review of all potential sites should be conducted. Building sites that either are on the waterfront or with water views are extremely difficult to find, and would be prohibitively expensive to acquire. Current headquarters site probably cannot be expanded sufficiently to accommodate future needs, nor could it take advantage of a location in a busy public area, despite its obvious marine orientation. An analysis should be undertaken to assess the cost and functional implications of this potential action at UCSB.

The Oxnard site is adequate for the present, but progress on a potential new building there should be closely monitored. Negotiations should be initiated with the Port Authority and input to the design process should be provided if an agreement for collocation is reached.

The design, fabrication, and installation of Sanctuary exhibits should be actively pursued through continued cooperation with partner organizations such as the Sea Life Center of the Santa Barbara Museum of Natural History, the Maritime Museum, and the Channel Islands National Park. Funding has been made available in FY 2003 to support exhibits at the first two of these locations.

FY 2003-2003 PAC Funding Activity at CINMS		
	<i>\$000</i>	<i>Purpose</i>
FY 03 Facilities	30.0	Planning for long-term facility at UCSB
FY 03 Exhibits	50.0	Fund displays in Sea Life Center
FY 03 Exhibits	100.0	Create multimedia exhibits at Maritime Museum
Total FY 03	180.0	
Total FY 00-02	130.0	
Total FY 00-03	310.0	



University of California at Santa Barbara Campus
 Site of Proposed CINMS Headquarters would be immediately in front of the white building, facing the Pacific Ocean

Cordell Bank National Marine Sanctuary

Assessment of Current Facilities:

At the completion of the Phase I Report on the Long Range Plan, the Cordell Bank National Marine Sanctuary (CBNMS) headquarters was collocated with the headquarters of the Gulf of the Farallones National Marine Sanctuary (GFNMS) in a former Coast Guard building at Chrissy Field at the Presidio in **San Francisco, CA**. Discussions were underway at that time between CBNMS and National Park Service staff at the Point Reyes National Seashore (PRNS) about locating in the Park Service building known as the “Red Barn,” near the PRNS headquarters site at **Bear Valley**.

The Red Barn is a former livestock barn with a large open interior that had been part of one of the farms from which PRNS was formed, and is an outstanding example of regional indigenous architecture. It has relatively little public visibility, as the PRNS headquarters is by design not a visitor destination. The Park Service has remodeled a portion of the interior of the building as a PRNS meeting center, and an adjacent part was altered to provide offices and open space to serve as the new CBNMS headquarters. It is attractive and efficient space, and was occupied in Fiscal Year (FY) 2002.

Current facility in the Red Barn is adequate for present purposes as administrative headquarters. However, it offers neither outreach nor interpretive activities, nor does it provide a base for marine operations. The Sanctuary clearly needs some form of interpretive facility near a visitor destination. The best opportunity appears to lie in continued cooperation with the National Park Service at PRNS in an effort to develop visitor interpretive exhibits that portray the interface between the terrestrial and marine environments and resources of the area. In addition, an operational base for vessels should be identified and acquired. It should be noted that the Park Service staff at PRNS has proven to be most willing and interested in a long-term cooperative relationship with CBNMS.

At this time, there are no significant exhibits in place that uniquely portray the resources of the CBNMS.

Summary of PAC Funding at CBNMS		
<i>FY</i>	<i>\$000</i>	<i>Purpose</i>
2000	43.0	Renovations to “Red Barn” building
2001	100.0	Renovations to “Red Barn” building
2002	0.0	
Total 00-02	143.0	



The “Red Barn” at Bear Valley, Point Reyes National Seashore



Entrance to CBNMS Headquarters
At the “Red Barn”

Longer Term Facility Prospects:

The CBNMS has submitted a request for funding for the rehabilitation of the pier at Sacramento Landing on the Tomales Bay waterfront within PRNS. A former steamboat landing, the pier is in deteriorated physical condition. The Park Service and NMSF have a mutual advantage in bringing this facility into operable condition so they both may conduct marine operations from it. The Sanctuary is also seeking funding for the fabrication and installation of exhibits at the PRNS Bear Valley Visitors Center.

Summary Of Prospects And Next Steps:

The new headquarters installation for the CBNMS, as well as the requests for funding, are quite modest efforts, compared to other Sanctuaries in the system. Nevertheless, the good cooperative relationship with the PRNS offers the best opportunity for Sanctuary program growth and facility development, if only because most of the shore side locations that might house CBNMS facilities are within the National Seashore. The development of exhibits at the PRNS Visitor Centers should be undertaken as soon as possible.



Cupola of "Red Barn"

FY 2003-2003 PAC Funding Activity at CBNMS		
	<i>\$000</i>	<i>Purpose</i>
FY 03 Facilities	18.0	Complete parking lot and landscaping
FY 03 Exhibits	15.0	Design exhibits at existing PRNS visitor center
Total FY 03	33.0	
Total FY 00-02	143.0	
Total FY 00-03	176.0	



End of "Red Barn"
Now Entrance to Point Reyes National Seashore
Conference Area

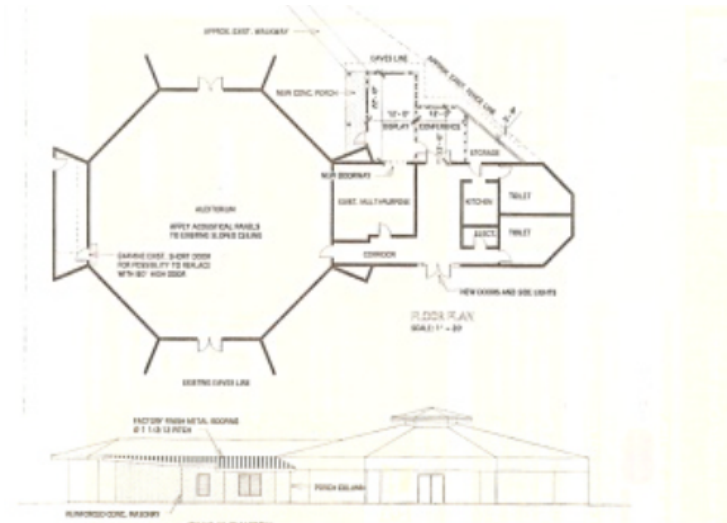
Fagatele Bay National Marine Sanctuary

Assessment of Current Facilities:

At the completion of the Phase I Report, the Fagatele Bay National Marine Sanctuary (FBNMS) headquarters office was located in a single room in a contemporary waterfront building in **Pago Pago, AS**, owned by the Territory of American Samoa. The room, which contained approximately 400 square feet and housed four full- and part-time staff members, was patently inadequate and inefficient. The Sanctuary’s small boat was parked outside on a trailer.

The Phase I Report strongly recommended that more suitable space be found for the Sanctuary as quickly as possible. Since then, the FBNMS staff has moved into larger quarters nearby in the convention center, another Territory-owned building. Plans are currently under review for an addition to this space to better accommodate staff and exhibits.

The new space is clearly more satisfactory than before, but is still too small for the Sanctuary’s staff requirements. Furthermore, it lacks any form of exhibit space, and the Sanctuary vessel remains unsecured.



Floor Plan and Elevation of Current FBNMS Offices, Pago Pago, American Samoa With Proposed Addition (Dotted Lines)

Summary of PAC Funding at FBNMS		
<i>FY</i>	<i>\$000</i>	<i>Purpose</i>
2000	0.0	
2001	25.0	Future facility planning
2002	0.0	
Total 00-02	25.0	



Pago Pago Harbor
Tutuila, American Samoa

Longer Term Facility Prospects:

Occupancy of the present headquarters space in convention center clearly does not meet all of Sanctuary’s requirements. Plans to expand the structure somewhat to meet some of these needs are currently underway, but exhibit and outreach space is not available. The geographic location of FBNMS is in a remote bay on an island in the South Pacific reached only with some difficulty by those with business on the island or determined tourists. Given this situation, the principal educational function of the Sanctuary will be directed toward a greater awareness of the value of the coral reefs, not only within the boundaries of the Sanctuary itself, but throughout this part of the world, by the residents of the island. Furthermore, research may become an important function of this particular site. Thus, accommodation of these functions will be uppermost in mind when seeking new quarters.

The most promising opportunity in fulfilling these requirements will be through construction of a new waterfront Visitor Learning Center in cooperation with the territorial Department of Commerce. This building would be located on the **Pago Pago** shoreline opposite the Executive Office Building, and would house significant exhibit space for the Sanctuary as well as some offices. In addition, it may accommodate the American Samoa Coastal Management Program and perhaps the Tourism Offices. Those offices will need to participate financially in the building’s construction. An earlier proposal (see preliminary sketch) where the Sanctuary would share space with the National Park of American Samoa (NPAS) has been tabled for the present.

Funding and timing are the most formidable aspects of achieving this joint center. Close coordination between the Sanctuary and other occupants and funding partners is imperative, so that adequate funds to meet each agency’s space requirements are made available at approximately the same time.

The Sanctuary has requested funding in FY 2004 for exhibits to be placed at the airport, ferry dock, the waterfront and current offices.

Summary Of Prospects And Next Steps:

This joint building venture between NMSS and various territorial government offices should be pursued with vigor. This implies that interagency coordination should be formalized in a written agreement that spells out the terms and

conditions, as well as the level of participation. Discussion of the means by which Federal funds can be transferred to the territory for construction of the building are now underway.

FY 2003-2003 PAC Funding Activity at FBNMS		
	<i>\$000</i>	<i>Purpose</i>
FY 03 Facilities	50.0	Develop Visitor Learning Center
FY 03 Facilities	60.0	Expand existing office and exhibit space
FY 03 Facilities	10.0	Provide secure storage and workspace for vessel
Total FY 03	120.0	
Total FY 00-02	150.0	
Total FY 00-03	270.0	



Earlier Proposed Joint Fagatele Bay National Marine Sanctuary/National Park of American Samoa Visitor Learning Center. This proposal is now tabled, but the sketch gives a flavor of the style of waterfront building contemplated in Pago Pago.



FBNMS Vessel and Trailer at Pago Pago Waterfront

Florida Keys National Marine Sanctuary

Assessment Of Current Facilities:

Sanctuary headquarters offices are located at **Marathon, FL**, in a large contemporary former house facing Florida Bay, located roughly halfway down the Keys. It is leased from the nonprofit Florida Keys Land and Sea Trust. Although in relatively good condition its original function as a large house contains awkward space when used as offices. Since it is located at the end of a half-mile dirt road off U.S. Route 1 it has no public visibility or functions, nor are any desired. Upon completion of the Nancy Foster Center, most of the Marathon staff will be moved to Key West, and this facility will be vacated.

The Upper Keys Regional Office is located in **Key Largo** in a leased, former plumbing supply warehouse along U.S. Route 1, the main artery of the Keys. It is a white concrete block structure, with a large blue painted FKNMS sign running the entire length of the building, and thus is perhaps the most visible in the entire NMSP network of facilities. It contains offices on the second floor, and storage and shop space on the ground floor, with a fenced yard for boat and trailer storage. The building is in relatively good condition, although the ground floor spaces probably are not code-compliant in a number of areas. The staff has now outgrown the available office space, and is reviewing alternatives for obtaining additional space.

NMSP now holds approximately 3.5 acres of land in Key West at the former Navy Submarine Base. The waterfront site contains two structures, one of which is now being re-designed into the major **Nancy Foster Environmental Center**, a complex that will contain a multi-agency visitor and interpretive center and FKNMS offices.

The Lower Keys Regional Office is located in downtown **Key West** in leased ground floor space of the historic former City Hall, now owned by a non-profit historic organization. It is accessible only from a side entrance, and the space, originally used for municipal fire truck storage, is not entirely weather-tight. Although located within a prominent building, it is not visible to the casual passer-by. It is one of the least satisfactory structures in the NMSP network. Its functions will be relocated to the Nancy Foster Center when that facility is completed.

The FKNMS maintains slips for its sizable fleet of vessels at a number of commercial marinas near its offices.

None of the current structures was built for the purposes they are now called upon to fulfill, and none is completely satisfactory in achieving Sanctuary objectives.

Summary of PAC Funding at FKNMS		
<i>FY</i>	<i>\$000</i>	<i>Purpose</i>
2000	1,000.0	Design and construct Nancy Foster Environmental Center
2001	900.0	Design and construct Nancy Foster Environmental Center
2002	6,257.6	Design and construct Nancy Foster Environmental Center
Total 00-02	8,157.6	



Upper Keys Regional Office
Key Largo, FL



Exterior of FKNMS Headquarters Building,
Marathon, FL

Longer Term Facility Prospects:

The Nancy Foster Environmental Center is now in design. Current plans call for construction of a new boat maintenance building, waterfront and dockage improvements for vessels, demolition of one deteriorated structure, reconstruction of the second building into a two floor administrative office wing and a joint visitor center to be supported by the National Park Service, U.S. Fish and Wildlife Service, and NMSP. The administrative wing of this facility, when completed in 2005, will replace the existing Lower Keys Regional Office, as well as most of the Marathon headquarters (although a small storefront office will be leased in Marathon to accommodate local outreach efforts).

Two solutions are under review for accommodating the growing space requirements at Key Largo. One shorter-term option calls for expansion through Federal funding of the existing building, most likely by building out largely unfinished space. Another longer-term alternative involves the acquisition of a small marina and associated facilities to accommodate offices and boat storage and repair facilities. A study on the feasibility of this latter option revealed significant financial and efficiency savings over all other alternatives.

Summary Of Prospects And Next Steps:

Planning for FKNMS facilities is well-advanced and if the momentum exhibited to date is maintained, many of the inadequacies found in the existing facilities can be overcome and operating efficiency can be significantly increased.

A decision will need to be made shortly regarding the expansion and possible relocation of the Key Largo facility. It is possible that the existing building can be expanded internally to meet interim requirements while planning proceeds on the eventual acquisition of a marina and total relocation of this facility there. Funding in FY 2003 has been made available for both of these activities.

Given the large number of vessels owned by and operated on behalf of the FKNMS, and the significant distances involved in this geographically large Sanctuary, attention should be given in the coming year to assuring the optimum locations and size for slips, docks, and other shore side facilities to support this important aspect of the Sanctuary's activities.

FY 2003-2003 PAC Funding Activity at FKNMS

	<i>\$000</i>	<i>Purpose</i>
FY 03 Facilities	242.0	Design and construct Nancy Foster Environmental Center
FY 03 Facilities	30.0	Plan for construction of new Upper Keys office in Key Largo
FY 03 Facilities	100.0	Expand existing space at Key Largo
Total FY 03	372.0	
Total FY 00-02	8,157.6	
Total FY 00-03	8,529.6	



Existing Key West buildings to be converted to Nancy Foster Environmental Center



FKNMS vessels in canal at potential relocation site for Upper Keys Office near Key Largo, FL

Flower Garden Banks National Marine Sanctuary

Assessment Of Current Facilities:

The single office of the Flower Garden Banks National Marine Sanctuary (FGBNMS) is located in leased space in **Bryan, TX**. The staff recently relocated there from inadequate and non-contiguous leased space in a former Federal Building, also in Bryan.

The move to the current offices is clearly an interim solution that resolved severe space limitations at the former offices. The Report on Phase I of the Long Term Plan pointed out the anomalous situation in which Bryan is 125 miles from the Gulf of Mexico Coast and farther from the Sanctuary itself. The Report recommended moving the FGBNMS offices from Bryan to a coastal location as soon as possible – suggesting the National Marine Fisheries Service (NMFS) Laboratory at **Galveston**, where biological research and administrative support functions are already in place.

It should be noted that the FGBNMS has a significant exhibit on the resources and issues of the Sanctuary in the Aquarium of the Americas along the waterfront in **New Orleans, LA**, an attraction that draws large numbers of visitors. In addition, there are Sanctuary exhibits at the Texas State Aquarium in Corpus Christi.

A Sanctuary vessel is maintained at Freeport, TX, some 40 miles southwest of Galveston.



FGBNMS coral display at Audubon Aquarium of the Americas, New Orleans, LA



Entrance to Audubon Aquarium of the Americas, New Orleans, LA

Summary of PAC Funding at FGBNMS		
<i>FY</i>	<i>\$000</i>	<i>Purpose</i>
2000	0.0	
2001	50.0	Exhibit at Aquarium of the Americas in New Orleans.
2002	0.0	
Total 00-02	50.0	