



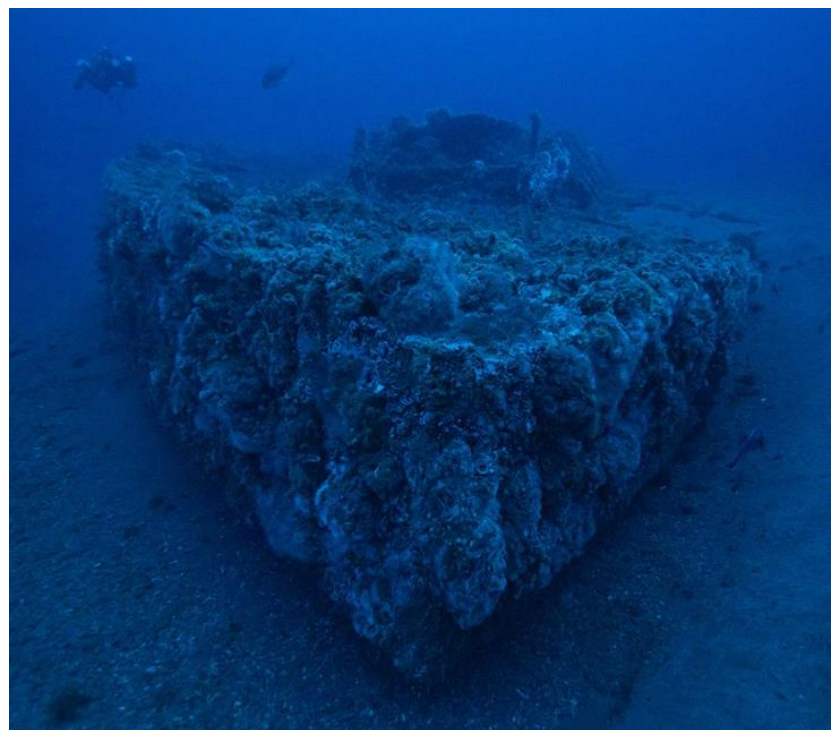
Science Needs Assessment Maritime Heritage

Conservation Issue

Monitor National Marine Sanctuary (MNMS) protects the remains of the shipwreck the USS *Monitor*. Documenting and monitoring the USS *Monitor* is a critical component of sanctuary management and will provide a better overall understanding of the story of the sanctuary and surrounding region.

Description

Detailed knowledge is critical to developing both a focused management plan and for continued monitoring of the remains of the USS *Monitor*. Within the MNMS management plan, Strategy AR-2 of the Archaeological Research Action Plan section and Strategy RM-1 of the Resource Monitoring Action Plan section highlight the need for new data on the shipwreck and the need to establish a long-term monitoring system for MNMS.



The wreck of the USS *Monitor*, a Civil War era ironclad, is a valuable historical and cultural resource that provides a unique window into the past. Photo: NOAA

Data and Analysis Needs

1. Continued monitoring of the USS *Monitor* shipwreck remains
2. Identification of new stakeholders to engage in the preservation of the shipwreck and history
3. Impacts of climate change to the USS *Monitor*

Potential Products

- Predictive modeling for potential management decision use
- Scientific papers and reports
- Education materials aimed at public audiences
- Public engagement opportunities
- New partnerships
- Communication and outreach materials aimed at a stakeholder and community member audience that focus on maritime heritage



Historical photos provide a window into the past of the USS *Monitor*. Continued archaeological monitoring and preservation will ensure important artifacts are protected and help tell the story of the USS *Monitor*. Photo: Library of Congress

For more information about this assessment, contact monitor@noaa.gov.

<https://sanctuaries.noaa.gov/science/assessment>