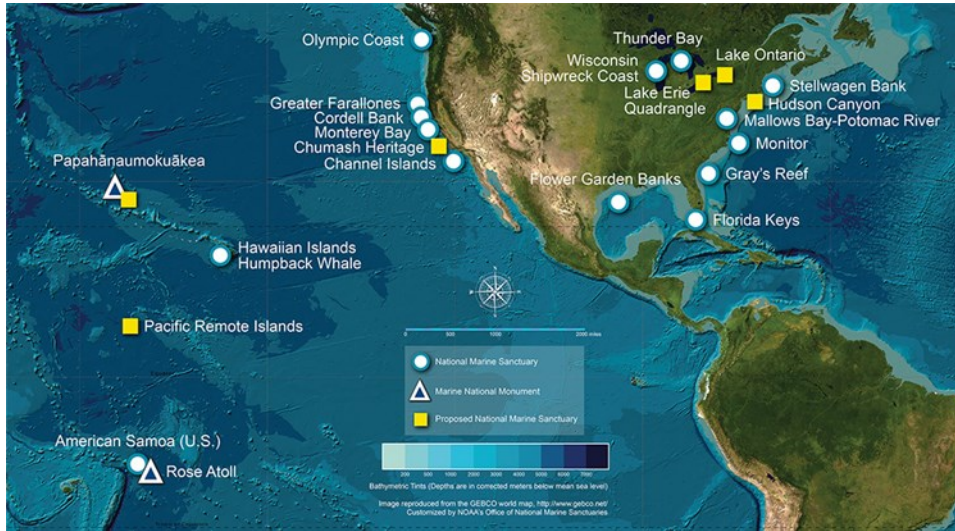


Exploring National Marine Sanctuaries & Marine National Monuments



Instructions

1. Circle or draw arrows to the national marine sanctuaries (circle icons) or marine national monuments (triangle icons) below you would most like to learn more about.



2. Rank your choices from 1–5 with numbers to the left of the circles or arrows. You will be creating a map and short presentation about one of your top choices.
3. Write the name of the sanctuary or monument you are exploring below.

Research It!

Record what you learn below and/or in science notebooks. Good sources include:

- “Sanctuary Watch”: <https://sanctuarywatch.ioos.us>
- National Marine Sanctuary System: <https://sanctuaries.noaa.gov>
- “Creature Feature” videos: <https://sanctuaries.noaa.gov/education/students>
- “Earth is Blue” videos: <https://sanctuaries.noaa.gov/earthisblue/videos.html#videos>
- National Oceanic and Atmospheric Administration (NOAA): <https://www.noaa.gov>

1. Where exactly is this site located?
2. What habitat(s) are found within your national marine sanctuary or marine national monument (or site)?
3. Name at least one important food producer or name of a shipwreck found in your site.

4. Name at least four examples of food consumers and/or historical discoveries found in your site.
5. Are there any endangered species found there? If so, which species?
6. Describe physical features in your site. For example, if there is a coastline, what is it like? What features are found on the seafloor? (Look for information about the geology of your site.)
7. How is the sanctuary or monument important to humans, including Indigenous peoples? What human activities take place there? How might the sanctuary benefit you, personally?
8. Why is this particular area protected? Why is it special?
9. What do you find most interesting about the site? What surprised you?
10. Why do we protect areas of the ocean?
11. What sources of information did you use?
12. Create a map of your sanctuary using ArcGIS Online, other software or with paper. Sanctuary maps can be found at <https://sanctuaries.noaa.gov/about/maps.html>.
13. Prepare a short, 2–5-minute presentation about your sanctuary or monument. Incorporate your map, photos, video clips and/or illustrations as visual aids.